



KNITTING PATTERN

# Dorn

## Children's Sweater

Design: Katharina Müller - My Favourite Stitches | Hobbii Design

## MATERIALS

2 (2) 2 (3) 3 skeins of Twister Solid, col 126 (col A)

1 (1) 1 (1) 1 skein of Unicorn, col 04 (col B)

Circular needle 3 mm (US 2.5) - 40 cm (16")

Circular needle 3.5 mm (US 4) - 40 cm (16") and 60 cm (24")

Double pointed needles 3 mm (US 2.5) and 3.5 mm (US 4) if you do not want to use the magic loop technique

Stitch markers

Stitch holders

## YARN QUALITY

 **Twister Solid**, Hobbii

55 % Cotton, 45 % Acrylic /  
100 g (3.5 oz) = 400 m (437 yds)

 **Unicorn**, Hobbii

75 % Merino Wool, 25 % Polyamide /  
100 g (3.5 oz) = 400 m (437 yds)

## GAUGE

25 sts x 34 rnds with needle 3.5 mm (US 4)  
= 10 cm (4")

## ABBREVIATIONS

st(s) = stitch(es)

k = knit

p = purl

tbl = through the back loop

rnd(s) = round(s)

sl1k = slip 1 stitch knitwise

k2tog = knit 2 stitches together

co = cast on

bo = bind off

col = color(s)

## QUESTIONS

If you have any questions regarding this pattern, please feel free to email us at

[support@hobbii.com](mailto:support@hobbii.com)

Please make sure to include the pattern's name and number.

Happy Crafting!

## SIZES

4 (6) 8 (10) 12 years

## MEASUREMENTS

Width: approx 32 (34) 36 (41) 42 cm / 12.6" (13.4") 14.2" (16.1") 16.5"

Length: approx 42 (45) 48 (51) 53 cm / 16.5" (17.7") 18.9" (20.1") 20.9"

Sleeve length (measured from armhole): 32 (35) 37 (38) 39 cm / 12.6" (13.8") 14.6" (15") 15.4"

## ABOUT THE PATTERN

The sweater is worked top down in the round with two colors on the yoke.

You can use the magic loop technique for the neck and the sleeves but if you prefer double pointed needles, you can use those instead.

If you are not already familiar with color dominance in multi-color knitting, it is advisable to search for information about this online before you start working on the yoke, since this is crucial for the look of the pattern.

## HASHTAGS ON SOCIAL MEDIA

#hobbiidorn #hobbiidesign

# Pattern



## NECKLINE

- Co 104 (106) 108 (112) 116 sts on the short circular needle 3 mm (US 2.5) with col A.
- Place a marker at the beginning of the rnd. Work rib (\*k1, p1\*) in the round
- until the neckline measures 3 cm (1.2").

## YOKE

- Change to needle 3.5 mm (US 4) and continue in stockinette stitch with col A.
- On the next rnd, increase 8 (9) 10 (15) 15 sts evenly on the rnd.
- On the next rnd, increase 8 (11) 14 (17) 19 sts evenly on the rnd (= 120 (126) 132 (144) 150 sts).
- Now work the chart with two colors a total of 20 (21) 22 (24) 25 times per rnd. Increase sts as indicated in the chart (= 240 (252) 264 (288) 300 sts).
- Once you have finished the chart, work another 6 (10) 17 (20) 24 rnds.
- The work now measures approx 15½ (17) 19 (20) 21 cm / 6.1" (6.7") 7.5" (7.9") 8.3" measured from the cast on edge.

## FRONT PIECE AND BACK PIECE (WORKED IN THE ROUND)

- The sts are now divided into body and sleeves, as the sleeve sts are put on hold on a piece of yarn or a stitch holder like this: K 69 (73) 78 (89) 93 sts (= front piece), put the next 51 (53) 54 (55) 57 sts on hold (= right sleeve), co 11 (12) 13 (13) 12 new sts, k 69 (73) 78 (89) 93 sts (= back piece), put the next 51 (53) 54 (55) 57 sts on hold (= left sleeve), co 11 (12) 13 (13) 12 new sts (= 160 (170) 182 (204) 210 sts).
- Continue working the sts of the front piece and the back piece in stockinette stitch in the round with col A until the work measures 39 (42) 45 (48) 50 cm / 15.4" (16.5") 17.7" (18.9") 19.7".
- Change to needle 3 mm (US 2.5) and work 3 cm (1.2") in rib (\*k1, p1\*).
- Bo loosely in rib.

## LEFT SLEEVE

- Place the sts on hold on the short circular needle 3.5 mm (US 4) (or on double pointed needles if you prefer not to use the magic loop technique).
- Co 5 (6) 6 (6) 6 new sts, place a marker to mark the beginning of the rnd, co 6 (6) 7 (7) 6 new sts and work until marker (= 62 (65) 67 (68) 69 sts).
- Work 3 cm (1.2") in stockinette stitch in the round (all sizes).

- Now decrease 16 (16) 16 (16) 16 sts evenly on the rnd before the ribbing like this: K2tog, k until 2 sts before marker, sl1k, k1, pass over the slipped st. Move the marker from the left needle to the right needle.
- Repeat these decreases every 2½ (3) 3 (3½) 4 cm / 1" (1.2") 1.2" (1.4") 1.6" a total of 8 times (= 46 (49) 51 (52) 53 sts).
- Work even in stockinette stitch until the sleeve measures 29 (32) 34 (35) 36 cm / 11.4" (12.6") 13.4" (13.8") 14.2".
- K 1 rnd until 2 sts before the marker and decrease 0 (1) 1 (0) 1 st like this: Sl1k, k1, pass over the slipped st.
- Change to needle 3 mm (US 2.5) and work approx 3 cm (1.2") in rib (\*k1, p1\*).
- Bo loosely.

## RIGHT SLEEVE

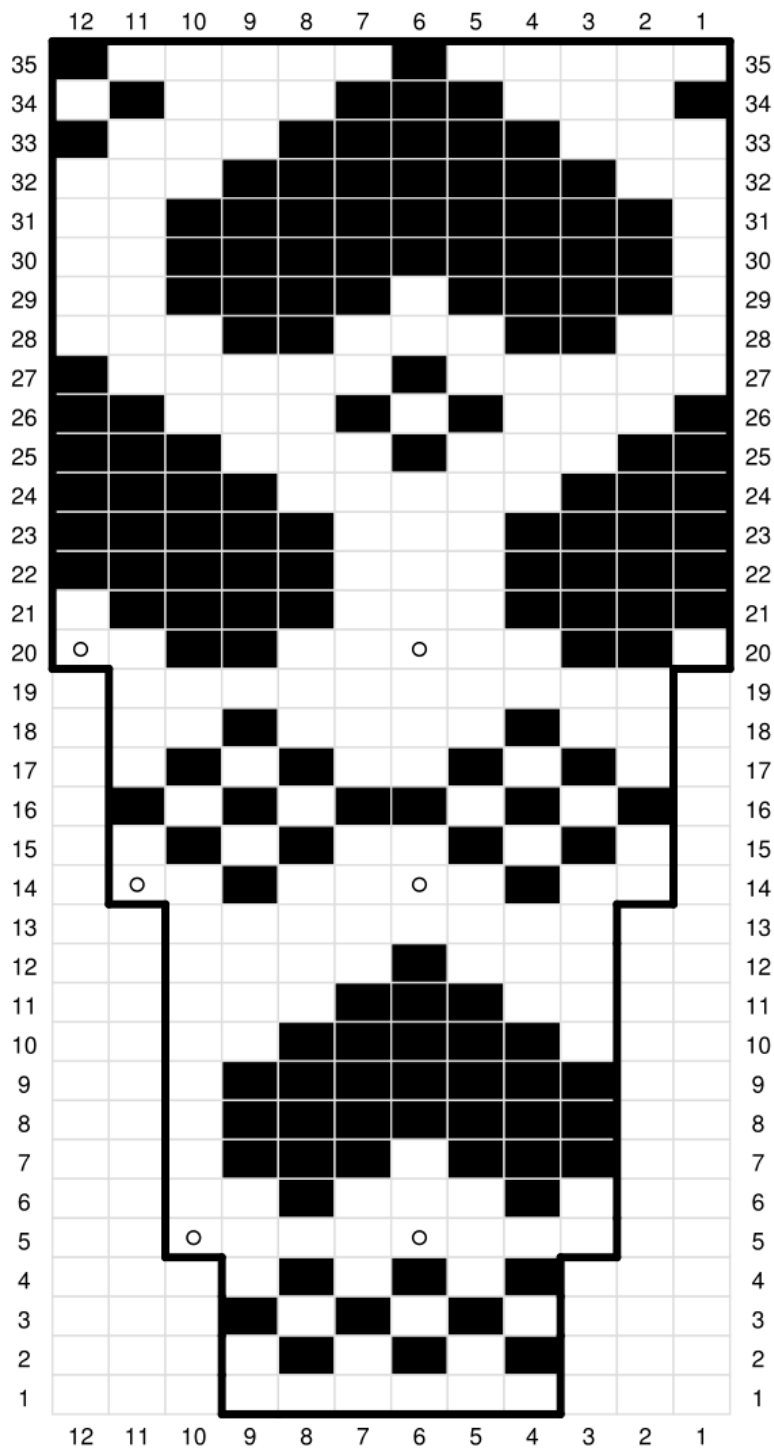
- Work the right sleeve following the same procedure as for the left sleeve.

## ENDING

- Sew the holes under the armholes together.
- Weave in the ends.

## CHART

(Only work the pattern within the marked area, e.g. only work sts 4-9 in line 1).



Color A



Color B



Increase (pick up the bar between the stitches and knit it through the back loop with color A)

**Happy Crafting!**

Katharina Müller - My Favourite Stitches