



KNITTING PATTERN

Spring Flora

Neck Warmer

Design: Gribba | Hobbii Design




MATERIALS

1 (1, 1, 1) skein of Unicorn Solid - Black (04)
1 (1, 1, 1) skein of Unicorn Solid - Royal Blue (07)
1 (1, 1, 1) skein of Unicorn Solid - Turquoise (09)

Circular needle 4 mm (US 6) - 60 cm (24") / 80 cm (32")
Circular needle 4.5 mm (US 7) - 60 cm (24") / 80 cm (32")
Double pointed needles 4 mm (US 6) or 4.5 mm (US 7)
Stitch markers
Sewing needle
Measuring tape
Scissors

YARN QUALITY

 **Unicorn Solid**, Hobbii
75 % Merino Wool, 25 % Polyamide
3.5 oz (100 g) = 437 yds (400 m)

GAUGE

4" x 4" (10 x 10 cm) = 22 sts x 30 rows
(washed)

ABBREVIATIONS

k = knit
p = purl
st(s) = stitch(es)
rnd(s) = round(s)
yo = yarn over
tbl = through back loop
co = cast on
bo = bind off

SIZE

S/M (L/XL, 2XL/3XL, 4XL/5XL)

MEASUREMENTS

Shoulder measurement

98/104 (110/115, 120/125, 130/135) cm / 39"/41" (43"/45", 47"/49", 51"/53")
Positive ease of approx 2-5 cm / 0.8"-2".

ABOUT THE PATTERN

The neck warmer is worked top down. The neck warmer is worked in the round with color changes where the yarn needs to be "locked" during the knitting process. 3 x 1 skein of Unicorn Solid is enough for 2 neck warmers if you do not use the same base color for both neck warmers.

HASHTAGS ON SOCIAL MEDIA

#hobbiidesign #hobbiispringflora



QUESTIONS

If you have any questions regarding this pattern, please feel free to email us at

support@hobbii.com

Please make sure to include the pattern's name and number.

Happy Crafting!

Pattern



INFORMATION AND TIPS

If you usually cast on sts or work rib pattern rather tightly, then use needle 4.5 mm (US 7) for the neck.

If you have too many sts on 10 cm / 4", then change to a larger needle size. If you have too few sts on 10 cm / 4", then change to a smaller needle size.

Remember to wash the swatch to see the actual gauge.

Neckline:

Loosely co 76 (84, 92, 96) sts on circular needle or double pointed needles 4 mm / US 6.

K 1 rnd and then work in rib (*k1 tbl, p 1*).

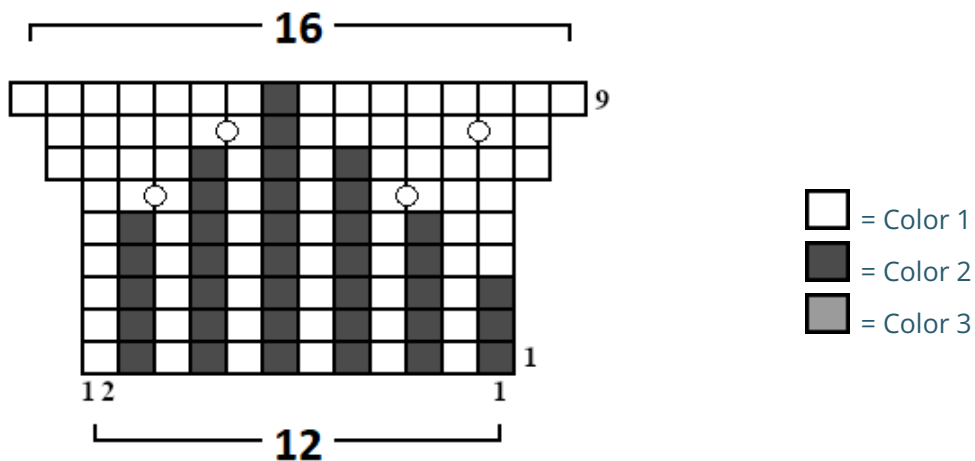
When the work measures 7 cm / 2.8" (or reaches your desired length), increase 32 (36, 40, 48) sts evenly on the rnd = 108 (120, 132, 144) sts.

(Place a stitch marker, as the work is measured from here.)

Begin working chart 1

Chart 1

○ = work 1 yo between 2 sts (the yo is worked tbl on the next rnd to avoid a hole) or use your preferred increase method.



Once chart 1 is finished, the number of sts has increased by 36 (40, 44, 48) sts = 144 (160, 176, 192) sts.

K 2 rnds (or until the work measures approx. 4 cm / 1.6").
Increase 42 (49, 48, 52) sts evenly on the rnd = 186 (209, 224, 244) sts.

K 4 rnds (or until the work measures approx. 5.5 cm / 2").
Increase 42 (50, 49, 52) sts evenly on the rnd = 228 (259, 273, 296) sts.

Begin working chart 2

Chart 2 - sizes: S/M

NB: for sizes M - XL - 3XL - 5XL, on rnd 10 of chart 2, change to circular needle 4.5 mm / US 7.

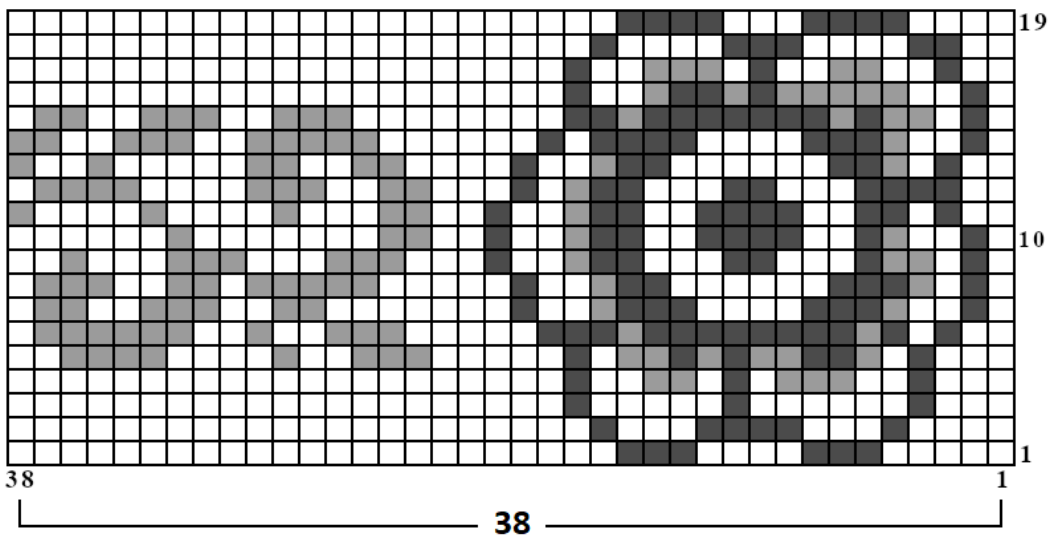


Chart 2 - sizes: L/XL and 4XL/5XL

NB: for sizes M - XL - 3XL - 5XL, on rnd 10 of chart 2, change to circular needle 4.5 mm / US 7.

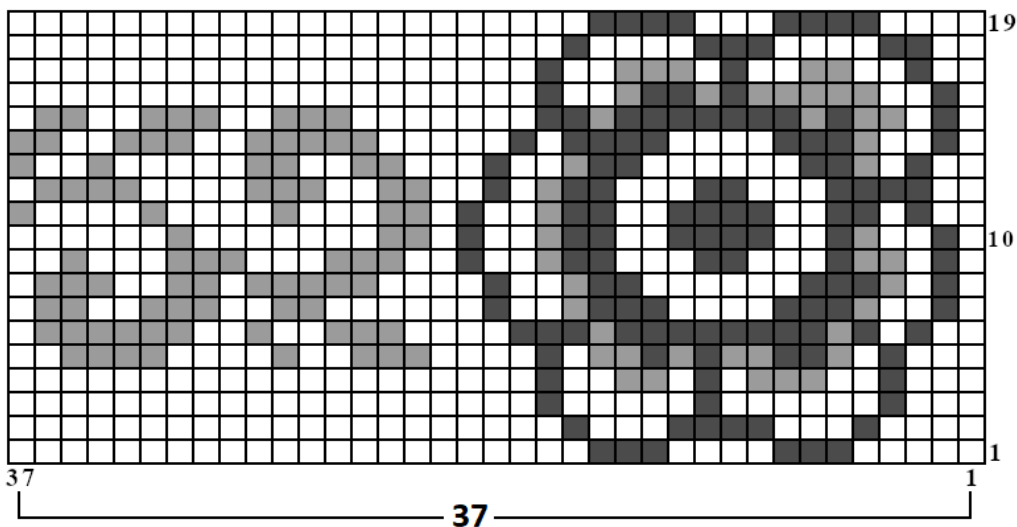
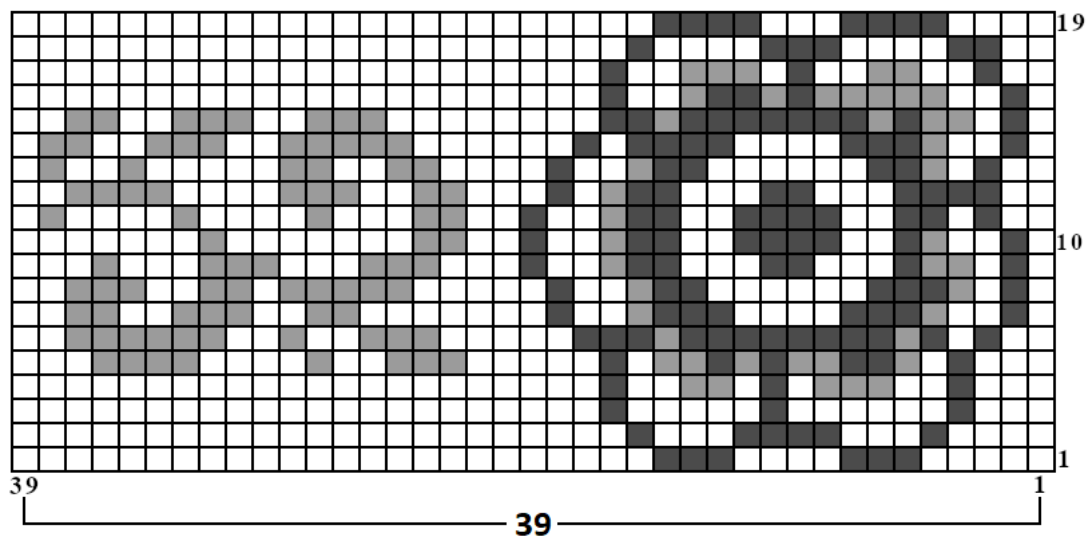


Chart 2 - 2XL/3XL

NB: for sizes M - XL - ~~3XL~~ - 5XL, on rnd 10 of chart 2, change to circular needle 4.5 mm / US 7.



Once chart 2 is finished, k 2 rnds, p 2 rnds, k 1 rnd and loosely bo all sts.
Weave in the ends, wash and block.

Happy Crafting!

Kristrún Sif Hansen
Gribba



Hazel (22)
Green Tea (26)
Dark Turquoise (08)



Black (04)
Royal Blue (07)
Turquoise (09)



Gray (03)
Teal (23)
Mustard (20)