



KNITTING PATTERN

# Lush Emerald

Design: Ruta Handmade | Hobbii Design



## MATERIALS

8 skeins of Metallico, Tahitian Green (#10)

Needles: 5.00 mm / US size 8

Cable needle

Tapestry needle

## YARN QUALITY

 **Metallico**, Hobbii

70% Polyamide, 21% acrylic, 9% wool

1.75 oz. (50 g) = 126 yds (115 meter)

## GAUGE

20 sts x 25 rows (10x10cm, 4"x4")

## ABBREVIATIONS

K - knit

P - purl

4RC - 4 stitches right cable

4LC - 4 stitches left cable

4RCp - 4 stitches right cable with 2 purl stitches

4LCp - 4 stitches left cable with 2 purl stitches

\*, \* - repeat

St / sts - stitches

## SIZE

Onesize

## MEASUREMENTS

Finished scarf measures 40x180cm / 15,5"x 71" 'not blocked (adjustable).

## HASHTAGS FOR SOCIAL MEDIA

#hobbiidesign #hobbiilushemerald



## QUESTIONS

If you have any questions regarding this pattern, please feel free to email us at

[support@hobbii.com](mailto:support@hobbii.com)

Please make sure to include the pattern's name and number.

Happy Crafting!

# Pattern



## How to make a 4 stitches left cables:

Put the first 2 stitches on cable needle and hold it in front of work, knit 2 stitches, knit 2 stitches from cable needle.

## How to make a 4 stitches right cables:

Put the first 2 stitches on cable needle and hold it in the back of work, knit 2 stitches, knit 2 stitches from cable needle.

## How to make a 4 stitches left cables with p sts:

Put the first 2 stitches on cable needle and hold it in front of work, purl 2 stitches, knit 2 stitches from cable needle.

## How to make a 4 stitches right cables with p sts:

Put the first 2 stitches on cable needle and hold it in the back of work, knit 2 stitches, purl 2 stitches from cable needle.

## SHAWL

With 5.00mm / US 8 needles cast on 84 sts. Knit first row (k until end)

### Cables

**1 r:** k1, p2, \*4LC, k2, p2, k2, 4RC, p2, 4LC, k2\*, p2, k2, p2, k2, 4RC, p2, 4LC, k2, p2, k2, 4RC, p2, k2, p2, repeat from \* to \*, p2, k1;

**2 r:** and all even rows from now on: P the purl stitches, K the knit stitches;

**3 r:** k1, p2, \*k2, 4LCp, p2, 4RCp, k2, p2, k2, 4LCp\*, p2, k2, p2, 4RCp, k2, p2, k2, 4LCp, p2, 4RCp, k2, p2, k2, p2, repeat from \* to \*, p2, k1;

**5 r:** repeat row 1;

**7 r:** repeat row 3;

**9 r:** k1, p2, \*k2, p2, k2, p2, k2, 4RC, p2, k2, p2, k2\*, p2, k2, p2, k2, 4RC, p2, k2, p2, k2, p2, k2, 4RC, p2, k2, p2, repeat from \* to \*, p2, k1;

**11 r:** k1, p2, \*k2, p2, k2, p2, 4RCp, k2, p2, k2, p2, k2\*, p2, k2, p2, 4RCp, k2, p2, k2, p2, k2, p2, 4RCp, k2, p2, k2, p2, repeat from \* to \*, p2, k1;

**13 r:** k1, p2, \*k2, p2, 4LCp, k2, p2, k2, 4RCp, p2, k2\*, p2, k2, p2, k2, p2, k2, 4RCp, p2, 4LCp, k2, p2, k2, p2, k2, p2, repeat from \* to \*, p2, k1;

- 15 r:** k1, p2, \*k2, p4, 4LC, p2, 4LC, p4, k2\*, p2, k2, p2, k2, p2, 4RC, p6, 4LC, p2, k2, p2, k2, p2, repeat from \* to \*, p2, k1;
- 17 r:** k1, p2, \*k2, p2, 4RCp, k2, p2, k2, 4LCp, p2, k2\*, p2, k2, p2, k2, p2, k2, 4LCp, p2, 4RCp, k2, p2, k2, p2, k2, p2, repeat from \* to \*, p2, k1;
- 19 r:** k1, p2, \*k2, p2, k2, p2, k2, 4RC, p2, k2, p2, k2\*, p2, k2, p2, k2, 4RC, p2, k2, p2, k2, p2, k2, 4RC, p2, k2, p2, repeat from \* to \*, p2, k1;
- 21 r:** k1, p2, \*k2, p2, k2, p2, 4RCp, k2, p2, k2, p2, k2\*, p2, k2, p2, 4RCp, k2, p2, k2, p2, k2, p2, 4RCp, k2, p2, k2, p2, repeat from \* to \*, p2, k1;
- 23 r:** repeat row 1;
- 25 r:** repeat row 3;
- 27 r:** repeat row 1;
- 29 r:** repeat row 3;
- 31 r:** k1, p2, \*4LC, k2, p2, k2, p2, k2, p2 4LC, k2\*, p2, k2, p2, k2, p2, k2, p2, 4LC, k2, p2, k2, p2, k2, p2, k2, p2, repeat from \* to \*, p2, k1;
- 33 r:** k1, p2, \*k2, 4LCp, p2, k2, p2, k2, p2, k2, 4LCp\*, p2, k2, p2, k2, p2, k2, p2, k2, 4LCp, p2, k2, p2, k2, p2, k2, p2, repeat from \* to \*, p2, k1;
- 35 r:** k1, p2, \*k2, p2, k2, 4RCp, p2, 4LCp, k2, p2, k2\*, p2, k2, p2, k2, p2, 4LCp, k2, p2, k2, 4RCp, p2, k2, p2, k2, p2, repeat from \* to \*, p2, k1;
- 37 r:** k1, p2, \*k2, p2, 4RC, p6, 4LC, p2, k2\*, p2, k2, p2, k2, p4, 4RC, p2, 4RC, p4, k2, p2, k2, p2, repeat from \* to \*, p2, k1;
- 39 r:** k1, p2, \*k2, p2, k2, 4LCp, p2, 4RCp, k2, p2, k2\*, p2, k2, p2, k2, p2, 4RCp, k2, p2, k2, 4LCp, p2, k2, p2, k2, p2, repeat from \* to \*, p2, k1;
- 41 r:** k1, p2, \*4LC, k2, p2, k2, p2, k2, p2, 4LC, k2\*, p2, k2, p2, k2, p2, k2, p2, 4LC, k2, p2, k2, p2, k2, p2, k2, p2, repeat from \* to \*, p2, k1;
- 43 r:** k1, p2, \*k2, 4LCp, p2, k2, p2, k2, p2, k2, 4LCp\*, p2, k2, p2, k2, p2, k2, p2, k2, 4LCp, p2, k2, p2, k2, p2, k2, p2, repeat from \* to \*, p2, k1.
- 44 r:** repeat row 2

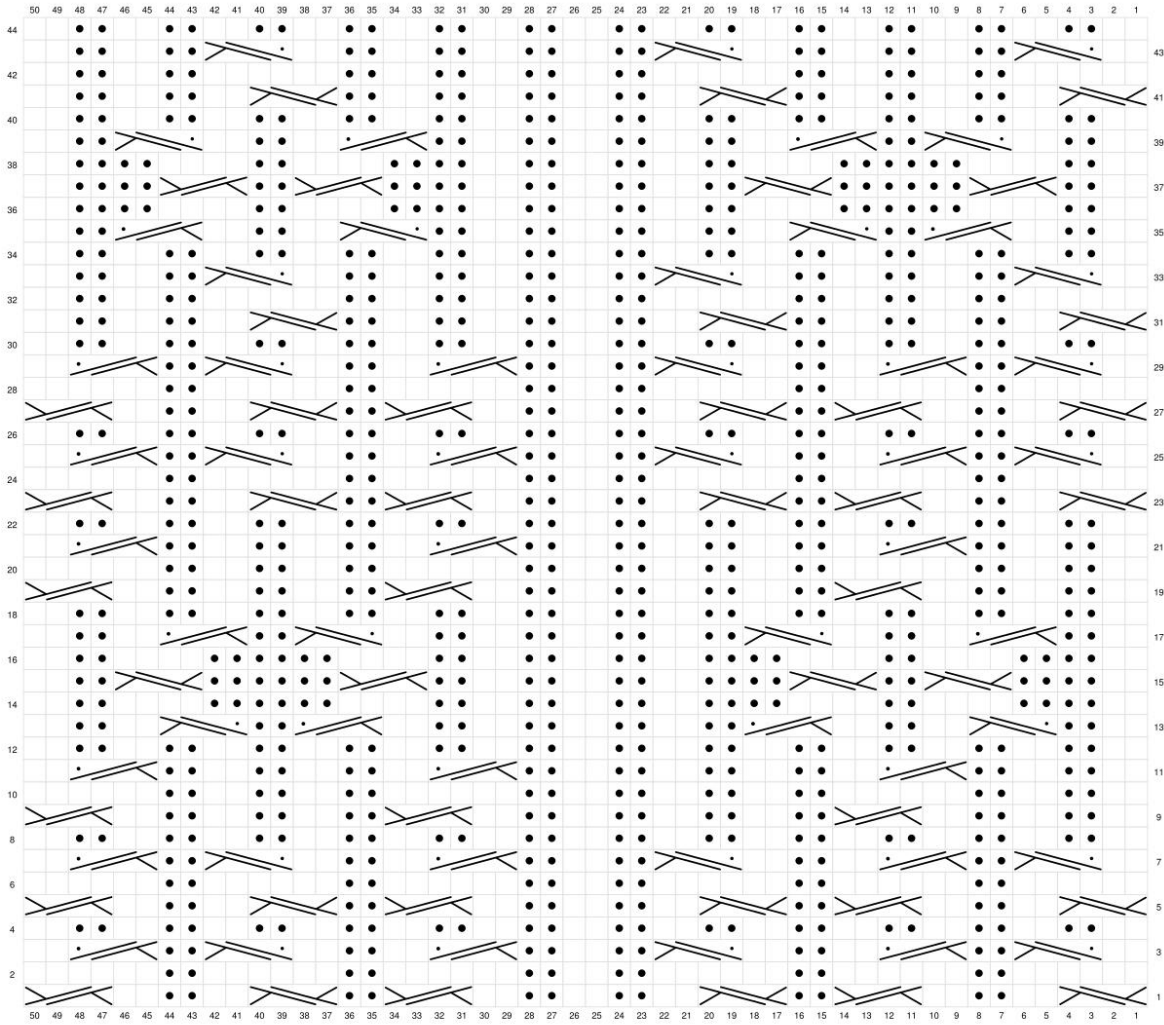
Continue repeating rows 1-44 until you reach 180cm or desired length.


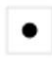





Bind off.

Weave in the ends.

Enjoy!

Happy knitting 😊  
Ruta Handmade



-  RS: Knit  
WS: Purl
-  RS: Purl  
WS: Knit
-  No stitch
-  4 stitches left cable
-  4 stitches left cables with p sts
-  4 stitches right cable
-  4 stitches right cable with p sts