



Ally - Sweater


No. 2016-212-8268


Materials

4 (4, 5) balls of Mohair Delight color 25
1 (1, 1) ball of Winter Glow color 24

Circular needles US 8 / 5 mm and US
15 / 10 mm, 31.5" / 80 cm
Stitch markers

Yarn quality

 **Mohair Delight**, Hobbii
50 % Mohair, 50 % Acrylic,
1.8 oz / 50 g = 164 yds / 150 m

 **Winter Glow**, Hobbii
51% Wool, 49% Acrylic, 7.1 oz / 200 g
= 766 yds / 700 m

Gauge

10 sts x 14 rows = 4" / 10 cm with 1
thread of Mohair Delight and 1 thread
of Winter Glow worked together with
needle US 15 / 10 mm.

Buy the yarn here:

<http://shop.hobbii.com/ally-sweater>

Hashtags on social media

#hobbiidesign #hobbially

Sizes

S (M, L)

Measurements

Width: 21.7" (23.6", 25.6") / 55 (60, 65) cm
Length: 19.3" (19.7", 20.1") / 49 (50, 51) cm

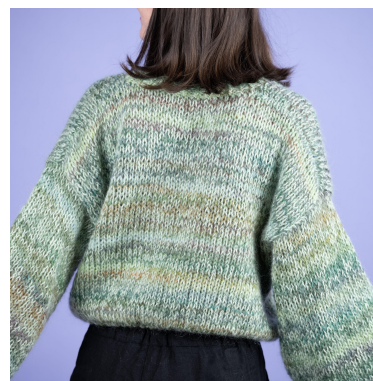
About the pattern

The sweater is worked with 1 thread of Mohair
Delight and 1 thread of Winter Glow.

The sweater is worked bottom up. Stitches for
armholes and neckline are bound off. The
shoulders are stitched together, and stitches
are picked up in the armhole. For an optimal
result, it is recommended to pick up stitches
with a smaller needle size, e.g. US 8-9 / 5-6
mm. The sleeves are worked top down.

Increasing 1 stitch (inc1): Pick up the bar
between the stitches and knit it through the
back loop (tbl).

Turn stitch (turn st): Turn with the German
short rows technique.



Happy knitting!

Techniques

Videos showing the techniques used in this pattern are found here:

German Short Rows:

https://www.youtube.com/watch?v=4Bz7YhiXuA8&list=PL_gKGVkKbA2IIG4JRf7swzsRINnCFQ6PD&index=19

Magic loop:

https://www.youtube.com/watch?v=FtLalIfMHMg&list=PL_gKGVkKbA2IIG4JRf7swzsRINnCFQ6PD&index=11&t=3s

Pattern

Body

Co 100 (110, 120) sts with 1 thread of Mohair Delight and 1 thread of Winter Glow on circular needle US 8 (5 mm) and work 0.8" / 2 cm in rib like this: k1 tbl, p1 tbl.

Rnd with incs

Change to circular needle US 15 (10 mm).

K 10 (11, 12) sts, inc1, repeat from * to * throughout the rnd = 110 (120, 130) sts.

Work stockinette stitch (st st) in the round, until the work measures 9.8" / 25 cm.

Place a marker on each side = side seams = 55 (60, 65) sts for the back piece and front piece, respectively.

Here the work is divided into armholes. Put the front piece sts on hold on the circular needle and work the sts of the back piece.

Back piece

Work st st in the flat on the circular needle.

Work even, until the armhole measures 8.7" (9.1", 9.4") / 22 (23, 24) cm = 18.5" (18.9", 19.3") / 47 (48, 49) cm in total.

Bo all sts.

Front piece

Work even, until the armhole measures 2.8" / 7 cm.

RS: Work 26 (28, 31) sts, bo 3 (4, 3) sts from the RS, work the remaining sts.

Right-hand side of the front piece (when wearing the sweater)

Dec at the neck like this:

Row 1: p all sts.

Row 2: k2tog tbl, work the remaining sts.

Repeat rows 1-2, until 8 decs have been made = 18 (20, 23) sts remain for the shoulder.

Work even, until the work measures 20.9" (21.3", 21.7") / 53 (54, 55) cm measured at the sleeve side.

Shaping the shoulder with short rows

*Work until 5 sts remain at the shoulder, turn,
1 turn st, work until 0 sts remain at the neckline, turn,
work until 8 sts remain at the shoulder, turn,
1 turn st, work until 0 sts remain at the neckline, turn,
work the rest of the row (work the turn sts as 1 st), turn,
bo.

Left-hand side of the front piece (when wearing the sweater)

Dec at the neck like this:

Row 1: p all sts.

Row 2: work until 2 sts remain, k2tog.

Repeat rows 1-2, until 8 decs have been made = 18 (20, 23) sts remain for the shoulder.
Work even, until the work measures 20.9" (21.3", 21.7") / 53 (54, 55) cm measured at the neck.

Shaping the shoulder with short rows

*Work until 5 sts remain at the shoulder, turn,
1 turn st, work until 0 sts remain at the neckline, turn,
work until 8 sts remain at the shoulder, turn,
1 turn st, work until 0 sts remain at the neckline, turn,
work the rest of the row (work the turn sts as 1 st), turn,
bo.

Sew together the shoulder seams with Kitchener Stitch.

Sleeves (worked top down from the armhole)

Pick up approx 50 (52, 54) sts from the armhole with circular needle US 15 / 10 mm and use the Magic Loop technique to work the sleeve.

The sts on the first rnd are k tbl.

Place a marker at the beginning of the rnd.

Work 10 rnds.

Rnd with decs

Work until 3 sts before the marker, k2tog tbl, k2, k2tog = 2 decs.

Decrease on every 10th rnd, until 40 (42, 44) sts remain.

Work even, until the sleeve measures 16.5" / 42 cm.

On the next rnd, decrease evenly to reach 24 (26, 28) sts.

Change to needle US 8 / 5 mm.

Work 1.2" / 3 cm in rib like this: k1 tbl, p1 tbl.

Bo.

Same procedure for the second sleeve.

Edges

Pick up sts along the neckline from the RS using circular needle US 8 / 5 mm.

Work 1.2" / 3 cm in rib like this: k1 tbl, p1 tbl.