



Dragon Scale Shawl

No. 1026-203-3364

Skill level: Experienced

Measurements: approx. 220 cm x 50 cm

Crochet hook: 3,5 mm

Yarn: Universe

Cassiopeia (#19) - 3 skeins

Buy your yarn here:

<http://shop.hobbii.com/dragon-scale-shawl>

Abbreviations:

ch - chain

st - stitch

sc - single crochet

dc - double crochet

trb - treble crochet

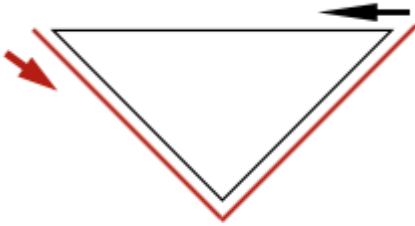
fpdc - front post double crochet

dc4tog - work 4 dc together

dc2tog - work 2 dc together

ch-space - chain space

Turn your shawl after each row!



Part 1 (Increase and middle)

Start: Make a Magic Ring

Row 1: ch 3 (counts at the beginning of a row as 1 dc), 4 dc into the ring

Row 2: ch 3, dc in next 3 stitches, 3 trb in last stitch

Row 3: ch 3, dc in first stitch, dc in next 6 stitches

Row 4: ch 3, dc in next stitch, ch 1, skip 2, 4 dc in next stitch, ch 1, skip 2, 3 trb in last stitch

Row 5: ch 3, dc in first stitch, ch 1, skip 1, dc in next stitch, ch 2, skip 1 ch, dc4tog, ch 2, skip 1 ch, dc in next 2 stitches

Row 6: ch 3, 2 dc in next stitch, ch 1, skip 2 ch, fpdc around the dc4tog, ch 1, skip 2 ch, 4 dc in next stitch, ch 1, skip 1 ch and 1 dc, 3 trb in next stitch

Row 7: ch 3, dc in first stitch, ch 1, skip 1, dc in next stitch, ch 2, skip 1 ch, dc4tog, ch 2, skip 1 ch, dc in next stitch, ch 2, skip 1 ch, dc2tog, dc in next stitch

Row 8: ch 3, dc in next stitch, ch 1, skip 2 ch, 4 dc in next stitch, ch 1, skip 2 ch, fpdc around the dc4tog, ch 1, skip 2 ch, 4 dc in next stitch, ch 1, skip 1 ch and 1 dc, 3 trb next stitch

Row 9: ch 3, dc in first stitch, ch 1, skip 1, dc in next stitch, ch 2, skip 1 ch, dc4tog, ch 2, skip 1 ch, dc in next stitch, ch 2, skip 1 ch, dc4tog, ch 2, skip 1 ch, dc in next 2 stitches

Row 10: ch 3, 2 dc in next stitch,

ch 1, skip 2 ch, fpdc around the dc4tog, ch 1, skip 2 ch, 4 dc in next stitch* *- repeat until 3 stitches before the end of the row,
ch 1, skip 1 ch and 1 dc, 3 trb in next stitch

Row 11: ch 3, dc in first stitch, ch 1, skip 1, dc in next stitch,

ch 2, skip 1 ch, dc4tog, ch 2, skip 1 ch, dc in next stitch* *- repeat until 4 stitches before the end of the row,

ch 2, skip 1 ch, dc2tog, dc in next stitch

Row 12: ch 3, dc in next stitch, ch 1, skip 2 ch, 4 dc in next stitch,
ch 1, skip 2 ch, fpdc around the dc4tog, ch 1, skip 2 ch, 4 dc in next stitch *-* repeat until 3
stitches before the end of the row,
ch 1, skip 1 ch and 1 dc, 3 trb in next stitch

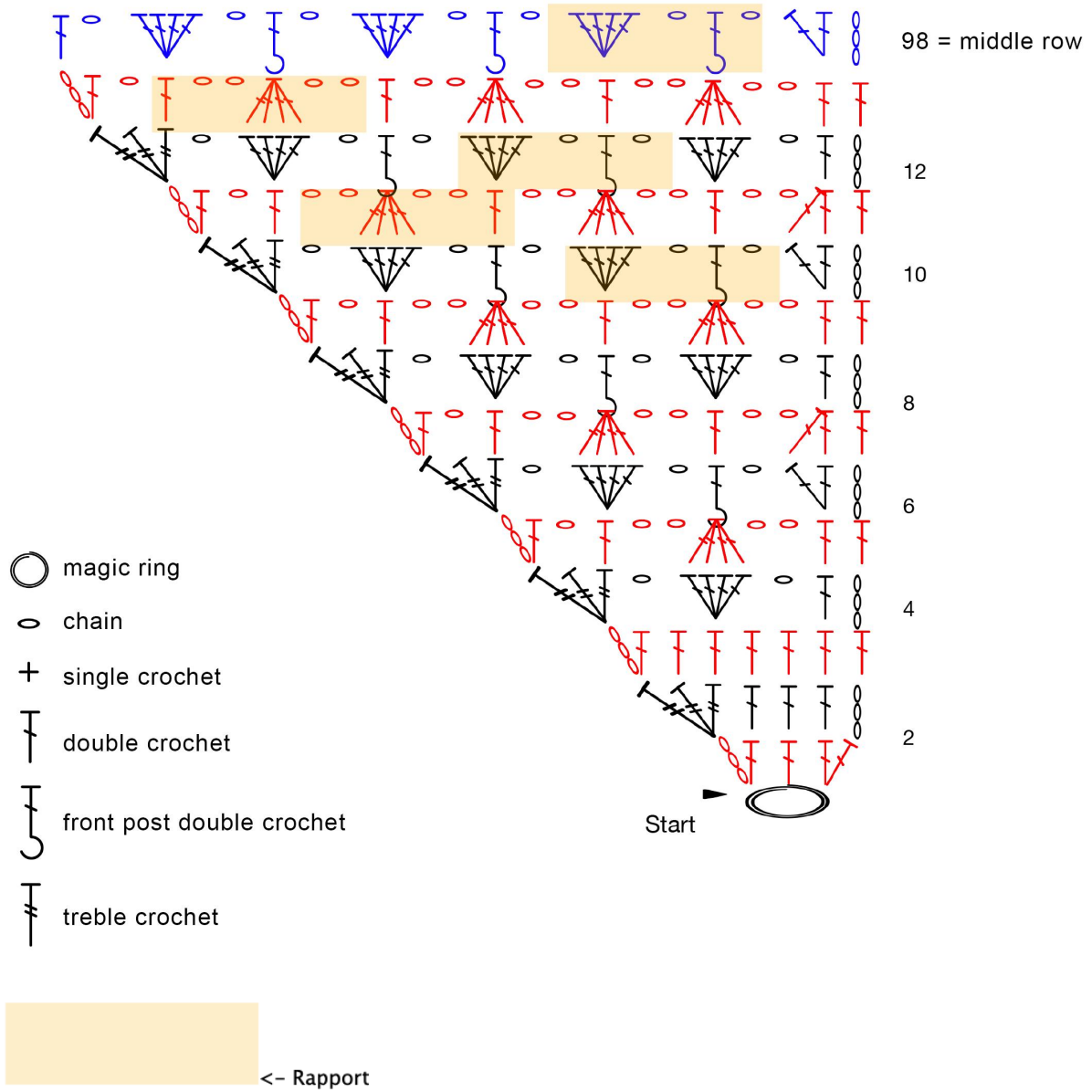
Row 13: ch 3, dc in first stitch, ch 1, skip 1,
dc in next stitch, ch 2, skip 1 ch, dc4tog, ch 2, skip 1 ch *-* repeat until 2 stitches before the
end of the row,
dc in next 2 stitches

**Now repeat rows 10 to 13 until you have 97 rows, or until about 40% of the total
amount of yarn has been used**

Row 98 = Middle row of the shawl

ch 3, 2 dc in next stitch,
ch 1, skip 2 ch, fpdc around the dc4tog, ch 1, skip 2 ch, 4 dc in next stitch *-* repeat until 3
stitches before the end of the row,
ch 1, skip 1 ch and dc, dc in next stitch

Crochet chart part 1 (increase and middle)



Part 2 (decrease)

Row 99: ch 2, dc into the ch-space, ch 1,
dc4tog, ch 2, skip 1 ch, dc in next stitch, ch 2, skip 1 ch *-* repeat until 3 stitches before
the end of the row,
dc2tog, dc in next stitch

Row 100: ch 3, dc in next stitch, ch 1, skip 2 ch, 4 dc in next stitch, ch 1, skip 2 ch,
fpdc around the dc4tog, ch 1, skip 2 ch, 4 dc in next stitch, ch 1, skip 2 ch *-* repeat until 3
stitches before the end of the row,
trb3tog (the first trb starts in the stitch of the dc4tog, the second in the following ch-space and
the last in the following dc)

Row 101: ch 2, dc into the ch-space, ch 1, dc4tog, ch 2, skip 1 ch,
dc in next stitch, ch 2, skip 1 ch, dc4tog, ch 2, skip 1 ch *-* repeat until 2 stitches before the
end of the row,
dc in next 2 stitches

Row 102: ch 3, 2 dc in next stitch, ch 1, skip 2 ch,
fpdc around the dc4tog, ch 1, skip 2 ch, 4 dc in next stitch, ch 1, skip 2 ch *-* repeat until 3
stitches before the end of the row,
trb3tog (the first trb starts in the stitch of the dc4tog, the second in the following ch-space and
the last in the following dc)

Repeat the rows 99 to 102 until you have 12 stitches left

Fifth last row: ch 2, dc into the ch-space, ch 1, dc4tog, ch 2, skip 1 ch, 1 dc in next stitch, ch
2, skip 1 ch, dc2tog, dc in next stitch

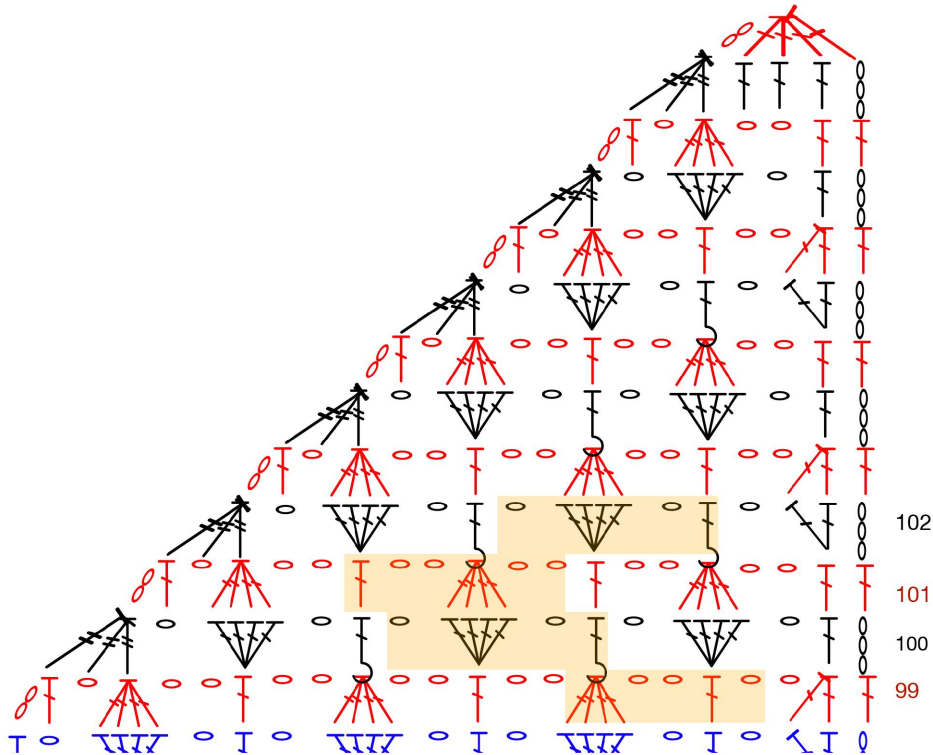
Fourth last row: ch 3, dc in next stitch, ch 1, skip 2 ch, 4 dc in next stitch, ch 1, skip 2 ch,
trb3tog (the first trb starts in the stitch of the dc4tog, the second in the following ch-space and
the last in the following dc)

Third last row: ch 2, dc into the ch-space, ch 1, dc4tog, ch 2, skip 1 ch, dc in next 2 stitches

Second last row: ch 3, dc in next stitch, 2 dc into the ch-space, trb3tog (the first trb starts in
the stitch of the dc4tog, the second in the following ch-space and the last in the following dc)

Last row: ch 2, dc4tog

Crochet chart part 2 (decreases)



Border

The edge is crocheted around the bottom of the shawl.
Join the yarn at the end of the shawl (the dc4tog).

Row 1: ch 3, 3 dc and 1 sc in the top of the dc4tog, ch 1,
(3 dc, ch 2, 3 dc) into the 2ch-space from the last row of the shawl
ch 1, sc in the lengthways lying trb from the second last row of the shawl,
ch 1
(3 dc, ch 2, 3 dc) into the 2ch-space from the third last row of the shawl,
**ch 1, sc in the lengthways lying trb from the next row of the shawl, ch 1, (3 dc, ch 2, 3 dc)
into the 2ch-space from the next row of the shawl* *-** repeat until the middle,
ch 1, sc in the lengthways lying dc from the middle row of the shawl,
ch 1,
(3 dc, ch 2, 3 dc) into the 3ch-space from the next row of the shawl,
**ch 1, sc in the lengthways lying trb from the next row of the shawl, ch 1, (3 dc, ch 2, 3 dc)
into the 3ch-space from the next row of the shawl* *-** repeat until the beginning of the shawl,
ch 1, sc and 4 dc into the ring

Row 2: ch 3, 3 dc in first stitch, ch 3, skip 3 dc, sc in sc, ch 3, skip 1 ch and 1 dc,

(3 dc, ch 2, 3 dc) into the ch-space, ch 3, skip 3dc and 1 ch, sc in sc, ch 3, skip 1 ch and 3 dc

- repeat until the end of the row

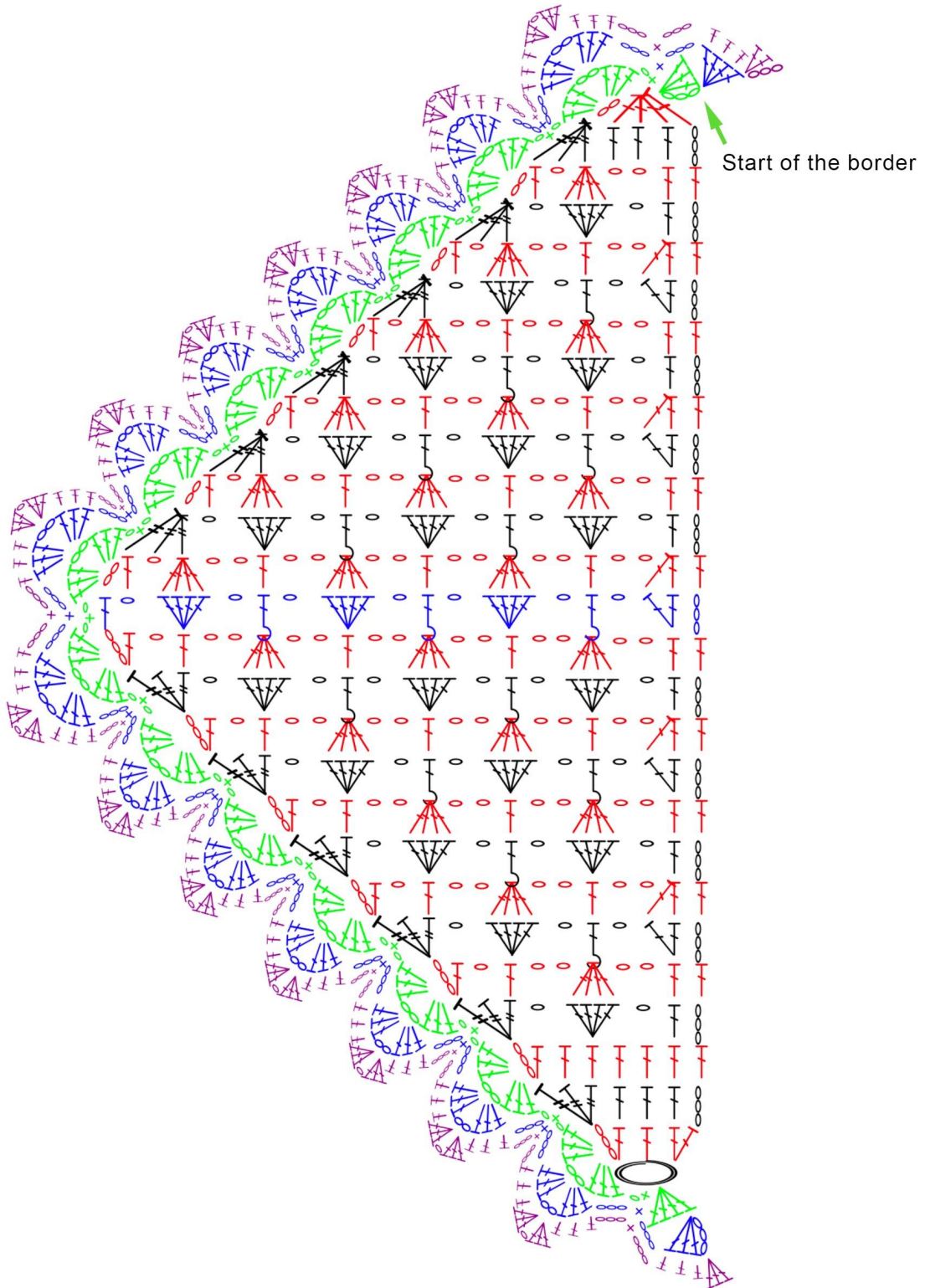
4 dc in last stitch

Row 3: ch 3, 2 dc in first stitch, dc in next 3 stitches, ch 3, skip 3 ch, sc in sc, ch 3, skip 3 ch, dc in next 3 stitches,

(3 dc, ch 1, 3 dc) into the ch-space, dc in next 3 stitches, ch 3, skip 1 ch, sc in sc, ch 3, skip 3 ch, dc in next 3 stitches *-* repeat until the end of the row,

3 dc in last stitch

Block the shawl if needed and weave in the ends.



Enjoy!
Morben Design

