



Olga - Shirt

No. 2004-203-8043

Materials

3 (4, 4, 5, 5) skeins Rainbow Bamboo, col. 11

Circular needle 80 cm/ 3 mm and 3,5 mm

Yarn

Rainbow Bamboo, Hobbii

60% Bamboo Viscose, 40% cotton/
100 g = 250 meters

Gauge

23,5 stitches and 38 rounds/rows
= 10 cm on needle 3,5 mm in pattern

Purchase your yarn here

<http://shop.hobbii.com/olga-shirt>

Size

S (M, L, XL, XXL)

Measurements

Width: 41 (43, 46, 49, 51) cm

Length: 49 (50, 52, 53, 55) cm

Pattern information

This shirt is worked bottom up on a circular needle until the armholes.

You work a little lace pattern. Be aware of pattern, when you begin working back and forth on the circular needle.

The sleeves are worked separately and is sewn on the shirt to create puff sleeves.

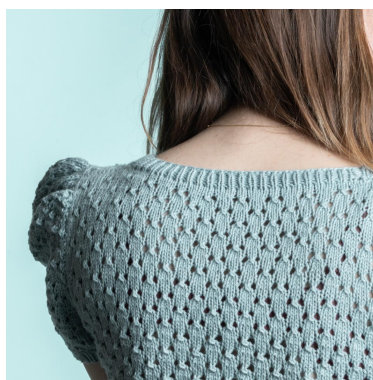
Technique videos

Magic loop:

<https://www.youtube.com/watch?v=FtLallschMg>

Hashtags for social media

#hobbii design #hobbiiolga



Happy knitting!

Pattern repeats

Pattern, worked in the round on circular needle

Round 1: *k3, yarn over, slip 1 stitch as to knit, k2tog, pass slip stitch over knit stitch, yarn over*, repeat *-* on entire round.

Round 2, 3 and 4: knit.

Round 5: *yarn over, slip 1 stitch as to knit, k2tog, pass slip stitch over knit stitch, yarn over, k3*, repeat *-* on entire round.

Round 6, 7 and 8: knit.

Pattern, worked back and forth on circular needle

Row 1, RS: *k3, yarn over, slip 1 stitch as to knit, k2tog, pass slip stitch over knit stitch, yarn over*, repeat *-* on entire row.

Row 2, WS: purl.

Row 3, RS: knit.

Row 4, WS: purl.

Row 5, RS: *yarn over, slip 1 stitch as to knit, k2tog, pass slip stitch over knit stitch, yarn over, k3*, repeat *-* on entire row.

Row 6, WS: purl.

Row 7, RS: knit.

Row 8, WS: purl.

Pattern

Rib edge

CO 192 (204, 216, 228, 240) stitches on circular needle 3 mm. Work rib in the round: k1, p1.

Work 4 cm rib.

Body

Change to circular needle 3,5 mm.

Work 3 rounds stockinette stitch.

Continue in **pattern, in the round on the circular needle**, until piece measures 32 (32, 33, 33, 34) cm.

Insert a marker at the beginning of the round and in the middle of the round = 96 (102, 108, 114, 120) stitches for each part.

Armhole, bind off

Work until 3 (4, 5, 6, 7) stitches before next marker, bind off 6 (8, 10, 12, 14) stitches loosely, repeat *-* one more time = 90 (94, 98, 102, 106) stitches for each part.

Slip the stitches for the front piece on a stitch holder and work the back piece.

Back piece

Continue in pattern, but now work the **pattern, back and forth on the circular needle**.

Armhole, decrease

RS: k1, k2tog tbl, pattern (back and forth) until there are 3 stitches left, k2tog, k1 = 2 stitches decreased.

Decrease on each RS row a total of 7 (8, 9, 10, 11) times = 76 (78, 80, 82, 84) stitches.

Work until armhole measures 15 (16, 17, 18, 19) cm.

Bind off loosely.

Front piece

Continue in pattern, but now work the **pattern, back and forth on circular needle**.

Armhole and neckline

Decrease for the armhole as on back piece, but **AT THE SAME TIME** bind off for the neckline, when armhole measures 6 (6, 6, 7, 7) cm.

Neckline

Left side

Insert a marker on each side of the 18 stitches in the middle.

RS: k to marker.

WS: bind off 4 (4, 5, 5, 6) stitches, work the rest of row.

RS: k to the opening.

WS: bind off 3 stitches, work the rest of row.

Now bind off 3 x 2 stitches and 2 x 1 stitch at the beginning of each WS row = 14 (15, 15, 16, 16) stitches for the shoulder.

Continue until armhole measures 17 (18, 19, 20, 21) cm.

Insert a marker at the sleeve side of piece = middle of shoulder.

Work 2 cm. Bind off.

Right side

RS: work pattern.

WS: purl all stitches.

RS: bind off 4 (4, 5, 5, 6) stitches, work the rest of row.

WS: purl all stitches.

RS: bind off 3 stitches, work the rest of row.

WS: purl all stitches.

Now bind off 3 x 2 stitches and 2 x 1 stitch at the beginning of each RS row = 14 (15, 15, 16, 16) stitches for the shoulder.

Continue until armhole measures 17 (18, 19, 20, 21) cm.

Insert a marker at the sleeve side of piece = middle of shoulder.

Work 2 cm. Bind off.

Put the middle 18 stitches on a stitch holder.

Neck edge

Sew the shoulder seams together from WS.

With circular needle 3 mm, pick up stitches along the neck edge (approx. 23 stitches on 10 cm).

Work 2 cm rib: k1, p1.

Bind off in rib.

Sleeves

Rib edge

CO 66 (72, 78, 84, 90) stitches op on circular needle 3 mm and work in the round using the Magic loop-technique.

Work 3 cm rib: k1, p1.

Insert a marker at the beginning of the round.

Sleeve

Change to circular needle 3,5 mm.

Round 1, increase-round: k2, *yo, k4*, repeat *-* 16 (17, 18, 19, 20) times on entire round = 16 (17, 18, 19, 20) yarn overs.

Round 2: knit all stitches, work yo's tbl = 82 (89, 96, 103, 110) stitches.

Round 3: knit all stitches.

Continue working the **pattern, in the round on circular needle.**

Continue until piece measures 5-6 cm.

Armhole

RS: knit until 3 (4, 5, 6, 7) stitches before marker, bind off 6 (8, 10, 12, 14) stitches loosely = 76 (81, 86, 91, 96) stitches.

Continue working the **pattern, back and forth on circular needle.**

Begin decreasing for armhole

RS: k1, k2tog tbl, k until there are 3 stitches left, k2tog, k1 = 2 stitches decreased.

WS: purl all stitches.

Repeat these 2 rows a total of 8 times = 60 (65, 70, 75, 80) stitches.

Insert a marker in each side of piece.

Now decrease in each side in every 4th row 6 times = 48 (53, 58, 63, 68) stitches, continue decreasing in every 2nd row 6 (7, 9, 10, 12) times = 36 (39, 40, 43, 44) stitches.

Bind off

RS: slip 1 stitch as to knit, k1, pass slip stitch over knit stitch, k2tog tbl, knit until there are 4 stitches left, k2tog, k2tog = 4 stitches decreased.

WS: slip 1 stitch as to purl, p1, pass slip stitch over purl stitch, p2tog, purl until there are 4 stitches left, p2tog tbl, p2tog tbl = 4 stitches decreased.

Continue decreasing like this until you have 20 (23, 24, 27, 28) stitches.

Bind off as follows: slip 1 stitch as to knit, k1, pass slip stitch over knit stitch, bind off as usual and knit the last 2 stitches together.

Work the second sleeve in the same way.

NB! The sleeve is bigger than the armhole, that's why the sleeve is secured to the armhole to shape the puff sleeves.

Insert sleeve in armhole and secure with pins and sew the sleeve on to the shirt as described here.

Sew the sleeve on to the shirt

Begin sewing under the sleeve. Hereafter sew each stitch to one stitch until marker on sleeve, on the next 3 cm, sew 2 stitches from the shirt together with 3 stitches on sleeve (skip every 3rd stitch on the sleeve).

Sew together in the same on the other side. The rest of the sleeve is sewn on armhole with Kitchener stitch.