



Party Scrunchie

No. 2013-202-8846

Materials

1 skein Diablo fv 38
1 spool Metallic Thread fv 313

Circular needle: size 4 mm/40 cm
Crochet hook: size 4 mm
Elastic hair tie

Yarn

Diablo, Hobbii
40% acrylic, 30% mohair, 30% polyamide/
25 g = 225 m
Metallic Thread, Madeira
55% metallic polyester, 45% polyamide/
1 spool = 1000 meters

Gauge

20 stitches = 10 cm with yarn doubled

Sizes

One size

Measurements

approx. 15 cm in diameter after assembly.

Pattern Information

The scrunchie is knitted in the round as a tube.
Then it is folded and sewn or crocheted together.

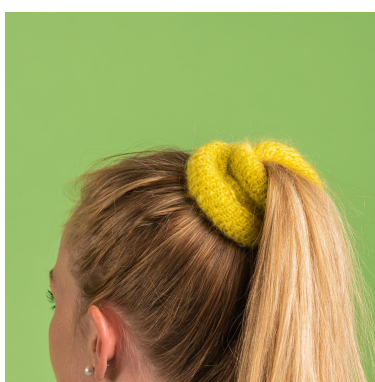
The metal thread can be added throughout or just to the crochet edge.

Hashtags for social media

#hobbiidesign #hobbiipartyscrunchie

Buy the yarn here

<http://shop.hobbii.com/party-scrunchie>



Happy crafting!

Pattern

Cast on 90 stitches using two strands Diablo and knit in the round in stockinette stitch.

Knit until work measures 12 cm.

Cast off without breaking the yarn.

Assembly

Turn the tube inside out and place the hair tie around the tube.

Fold the tube so that the cast on and cast off edges are together, encasing the hair tie.

Crochet slip stitches or single crochet through both layers all the way around.

Weave in the ends.