

Pattern

Sensory Bunny

YARN USAGE

Bunny H 20 cm: 100 g

A few meters of black yarn
for nose and eyebrows



Many colours

Crochet in Go handmade's Soft Bamboo "fine".
The bamboo gives the softest experience and
lightness, the cotton adds the firmness, and a little
acrylic makes the yarn extra strong:
70% Bamboo/23% Cotton/7% Acrylic, 50 g/180 m.

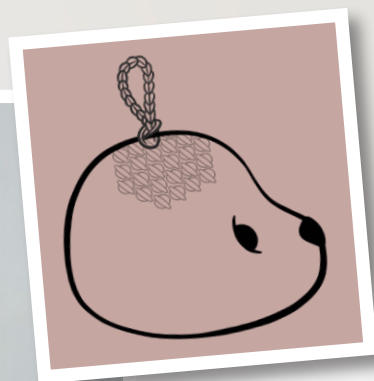


Rattle cellophane
in ears

Squeeaker in paws

Rattleboxes in paws

- ### MATERIALS
- Safety eyes 10 mm
 - Wooden ring 55 mm
 - Teething ring "Star"
 - Hanging ring
 - Rattle cellophane
 - Rattleboxes
 - Squeakers, Toy stuffing
 - Crochet hook 3,0 - 3,5 mm



Soft Bamboo "fine"



- a Bamboo yarn out of the ordinary

The yarn contains all of 70% of bamboo, which gives the yarn the softest experience and a special lightness. Comfortable to the skin, it makes it also very child-friendly. The texture is silky with a beautiful drape.

Bamboo and environment - Bamboo is the fastest growing plant in the world and thus a great source of sustainable production.

Bamboo releases more oxygen than any other plant and grows without the use of pesticides. 23% cotton and 7% acrylic help to stabilize the soft bamboo and give the thread a good shape retention. Machine washable.

70% Bamboo/23% Cotton/7% Acrylic,
50 g/180 m.



Go handmade
quality design in a unique style

YARN USAGE:

Sensory Bunny H 20 cm: 100 g

A few meters of black yarn for nose and eyebrows.

MATERIALS:

Safety eyes 10 mm
Wooden ring 55 mm
Teething ring "Star"
Hanging ring
Rattle cellophane
Rattleboxes
Squeakers
Toy stuffing
Crochet hook 3,0 - 3,5 mm

The given amounts of yarn are for guidance only.

If nothing else is specified, work in spiral rounds. To finish the work, join the round with a sl st. Leave a 20 cm length of yarn and cut. Pull the yarn through the stitch.

It is recommended that the filling continues on an ongoing basis as the work progresses.

Mounting of the safety eyes:

The eyes are inserted, and the rear stops to the eyes are pushed from the inside.
The rear stops can and should be a little hard to plug in to ensure that they are sticking well.

ABBREVIATIONS AND DEFINITIONS

st(s)	Stitch(es)
cr	Magic ring
ch	Chain stitch
t-ch	Turn chain stitch, 1 ch then turn the work
sl st	Slip stitch
dc	Double crochet
2 dc inc	Increase (2 dc in one st)
dc 2 tog	Decrease (2 dc worked together)
...	The instructions shown in these brackets must be repeated for the whole round/row or with the number after x.
(..)	At the end of the line - indicates the total number of stitches.

Suspension cord:

Lay a piece of yarn double, insert the hook through a stitch on top of the head and pull the thread back through it, starting from this loop crochet 15 ch with both threads and then fasten the loose chain with the remaining yarn thus forming a loop.

Strap for pendant - size: L 8 cm x W 1 cm:

- 1.) 26 ch, turn work.
- 2.) 25 dc from 2nd ch, 1 t-ch.
- 3.) 25 dc.

Break the yarn, add the Teething ring "Star" or Wooden ring, and then attach the pendant.

UK

SENSORY BUNNY

BODY

1.)	cr with 8 dc	(8)
2.)	*2 dc inc*	(16)
3.)	*1 dc, 2 dc inc*	(24)
4.)	*2 dc, 2 dc inc*	(32)
5.)	*3 dc, 2 dc inc*	(40)
6.)	*4 dc, 2 dc inc*	(48)
7.)	*5 dc, 2 dc inc*	(56)
8.)	*6 dc, 2 dc inc*	(64)
9. - 12.)	64 dc	(64)
13.)	*6 dc, dc 2 tog*	(56)
14. - 15.)	56 dc	(56)
16.)	*5 dc, dc 2 tog*	(48)
17.)	48 dc	(48)
18.)	*4 dc, dc 2 tog*	(40)
19. - 22.)	40 dc	(40)
23.)	*3 dc, dc 2 tog*	(32)
24. - 26.)	32 dc	(32)
27.)	*2 dc, dc 2 tog*	(24)
28. - 32.)	24 dc	(24)

Fill the body.

HEAD

1.)	cr with 6 dc	(6)
2.)	*2 dc inc*	(12)
3.)	*1 dc, 2 dc inc*	(18)
4.)	*2 dc, 2 dc inc*	(24)
5. - 7.)	24 dc	(24)
<i>The eyes are inserted after row 7.</i>		
8.)	*2 dc, 2 dc inc* x 6, 6 dc	(30)
9.)	*3 dc, 2 dc inc* x 6, 6 dc	(36)
10.)	*4 dc, 2 dc inc* x 6, 6 dc	(42)
11.)	*5 dc, 2 dc inc* x 6, 6 dc	(48)
12.)	*6 dc, 2 dc inc* x 6, 6 dc	(54)

13.)	*7 dc, 2 dc inc* x 6, 6 dc	(60)
14.)	*8 dc, 2 dc inc* x 6, 6 dc	(66)
15. - 21.)	66 dc	(66)
22.)	*9 dc, dc 2 tog*	(60)
23.)	*8 dc, dc 2 tog*	(54)
24.)	54 dc	(54)
25.)	*7 dc, dc 2 tog*	(48)
26.)	*6 dc, dc 2 tog*	(42)
27.)	*5 dc, dc 2 tog*	(36)
28.)	36 dc	(36)
29.)	*4 dc, dc 2 tog*	(30)
30.)	*3 dc, dc 2 tog*	(24)
31.)	*2 dc, dc 2 tog*	(18)
32.)	*1 dc, dc 2 tog*	(12)
33.)	*dc 2 tog*	(6)

Add Toy stuffing into the head.

Cut the yarn and pull through the stitches, tighten and sew the head together.

Shape the head and the eye hollows:

With Soft Bamboo "fine", thread a needle with approx. 25 cm yarn.

Put the needle in from under the chin and out at the side of the eye.

Guide the thread around some stitches by the eye and then back out under the chin. Tighten the yarn to form the hollow around the eye, tighten the yarn through a few stitches under the chin.

Repeat for the other side of the same eye.

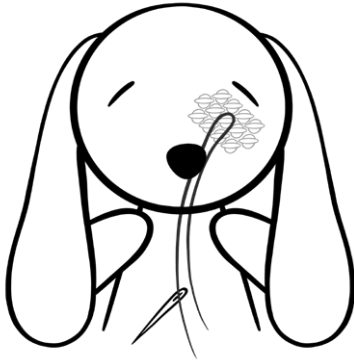
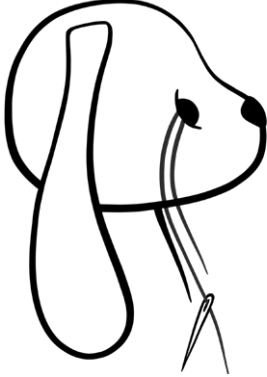
The hollow for the eye is now completed. Should you want the hollow deeper the process can be repeated and a stitch added towards the top of the eye.

Remember to always keep the yarn tight when the needle is pulled out under the chin, during the sewing to keep the tension and for the hollow to become permanent.

Repeat the process for the other eye.

See illustration.

Embroider nose and eyebrows as shown in the pictures.



EARS (2 X)

- | | | |
|-----|------------------|------|
| 1.) | cr with 6 dc | (6) |
| 2.) | *2 dc inc* | (12) |
| 3.) | *1 dc, 2 dc inc* | (18) |
| 4.) | *2 dc, 2 dc inc* | (24) |

- | | | |
|------------|------------------|------|
| 5.) | *3 dc, 2 dc inc* | (30) |
| 6.) | *4 dc, 2 dc inc* | (36) |
| 7.) | *5 dc, 2 dc inc* | (42) |
| 8. - 12.) | 42 dc | (42) |
| 13.) | *5 dc, dc 2 tog* | (36) |
| 14. - 18.) | 36 dc | (36) |
| 19.) | *4 dc, dc 2 tog* | (30) |
| 20. - 24.) | 30 dc | (30) |
| 25.) | *3 dc, dc 2 tog* | (24) |
| 26. - 30.) | 24 dc | (24) |
| 31.) | *2 dc, dc 2 tog* | (18) |
| 32. - 36.) | 18 dc | (18) |
| 37.) | *1 dc, dc 2 tog* | (12) |
| 38. - 42.) | 12 dc | (12) |

Add 2 layers of Rattle cellophane to the ears. Sew the ears onto the head as seen in the pictures. Sew the head to the body when all parts have been attached.

ARMS (2 X)

- | | | |
|------------|------------------|------|
| 1.) | cr with 6 dc | (6) |
| 2.) | *2 dc inc* | (12) |
| 3.) | *1 dc, 2 dc inc* | (18) |
| 4.) | *2 dc, 2 dc inc* | (24) |
| 5.) | *3 dc, 2 dc inc* | (30) |
| 6.) | *4 dc, 2 dc inc* | (36) |
| 7. - 8.) | 36 dc | (36) |
| 9.) | *4 dc, dc 2 tog* | (30) |
| 10. - 11.) | 30 dc | (30) |
| 12.) | *3 dc, dc 2 tog* | (24) |
| 13.) | 24 dc | (24) |
| 14.) | *2 dc, dc 2 tog* | (18) |
| 15. - 30.) | 18 dc | (18) |
| 31.) | *1 dc, dc 2 tog* | (12) |
| 32.) | *dc 2 tog* | (6) |

Insert the Squeakers and toy stuffing into the arms. Sew the arms to the body.

LEGS (2 X)

- 1.) Chain 8, 2 dc in 2nd ch from hook,
5 dc, 5 dc in the final ch,
5 dc in ch on the opposite side,
2 dc in the final ch (19)
- 2.) 2 dc inc, 7 dc, 2 dc inc x 3, (24)
7 dc, 2 dc inc
- 3.) 2 dc inc x 2, 8 dc, 2 dc inc x 5, (32)
8 dc, 2 dc inc
- 4.) 2 dc inc x 3, 11 dc, 2 dc inc x 5, (41)
12 dc, 2 dc inc
5. - 6.) 41 dc (41)
- 7.) 1 dc in the back loop of each dc (41)
- 8.) 18 dc, dc 2 tog x 4, 15 dc (37)
- 9.) dc 2 tog x 2, 13 dc, (32)
dc 2 tog x 3, 14 dc
- 10.) 14 dc, dc 2 tog, 1 dc, (30)
dc 2 tog, 13 dc
- 11.) dc 2 tog, 10 dc, dc 2 tog x 3, (25)
10 dc, dc 2 tog
- 12.) 9 dc, dc 2 tog, 3 dc, dc 2 tog, 9 dc (23)
13. - 17.) 23 dc (23)
- 18.) 6 dc, dc 2 tog, 4 dc, dc 2 tog, (20)
5 dc, dc 2 tog, 2 dc
19. - 23.) 20 dc (20)
- 24.) 7 dc, dc 2 tog, 7 dc, dc 2 tog, 2 dc (18)
25. - 27.) 18 dc (18)
- 28.) 3 dc, dc 2 tog, 8 dc, dc 2 tog, 3 dc (16)
- 29.) * 1 dc, dc 2 tog* x 5, (11)
finish with 1 dc
- 30.) dc 2 tog x 5, 1 dc (6)

*Insert the Rattleboxes and toy stuffing into the legs.
Sew the legs to the body.*



Good to know

Hook Size + Tension

Crocheters crochet very differently: some crochet with a hook size 2,0 mm and obtain the same size of design and quality as a person who crochets with a hook size 4,0 mm. We owe this knowledge to the team of crocheters who join us.

The key to crochet a specific size is a lot about the crochet style/hands/skills, rather than the size of hook. Therefore, we will recommend a range of hook sizes.



LOT20200405

Go handmade

quality design in a unique style