



Mimi - Slipover

No. 2004-202-9597

Materials

5 (6, 7, 8) skeins Summer Cloud col. 02

Circular needle 60 (60, 80, 80) cm/
6 mm (US10) and 7 mm (US10.75)

Cable needle

Stitch markers

Stitch holders

Yarn

Summer Cloud, Hobbii

66% Cotton, 34 Acrylic/ 50 g = 75 meters

Gauge

16 stitches x 20 rounds = 10 cm

on needle 7 mm in pattern, slightly stretched

Purchase your yarn here

<http://shop.hobbii.com/mimi-slipover>

Hashtags for social media

#hobbiidesign #hobbiimimi

Size

S (M, L, XL)

Measurements

Width: 38 (42, 48, 52) cm, piece will have a bit of positive ease.

Length: 45 (48, 51, 54) cm

Pattern information

This is a short and fitted model.

The slipover is worked bottom up on circular needles.

Work cables on the front piece according to the diagram. The back piece is worked in rib.

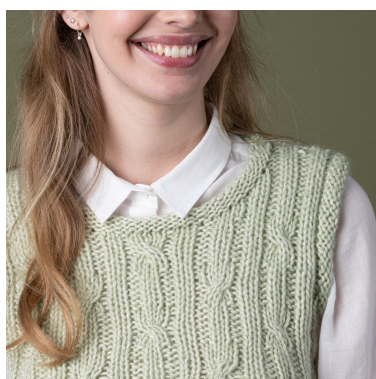
There are bias shoulders on the back piece.

Sleeve- and neck edge is worked in reversed stockinette stitch.

Technique video's

3-needles-aflukning -

https://www.youtube.com/watch?v=PrscXuXkXBQ&list=PL_gKGVkKbA2IIG4JRf7swzsRINnCFQ6PD&index=5&t=0s



Have fun making this pattern!

Pattern

Ribbed edge, body

CO 120 (136, 152, 168) stitches on circular needle size 6 mm (US10) and work in the round. Work 5 cm in rib: k2, p2.

Mark the sides

Insert a marker at the beginning of the round, in between 2 purl stitches, and insert a second marker after 60 (68, 76, 84) stitches, again in between 2 purl stitches.

Body

Change to circular needle 7 mm (US10.75) and work 4 rounds in rib. Finish at the marker at the beginning of the round.

Continue working the diagram on the front piece and rib k2/p2 on back piece as follows:

Knit 1 (1, 1, 1), work the 16 stitches in the frame on the diagram 3 (4, 4, 5) times, work another 11 (3, 11, 3) stitches according to the diagram = 60 (68, 76, 84) stitches on front piece, work rib on back piece.

Continue until piece measures 29 (31, 33, 35) cm. Finish with an even numbered round on the diagram.

NB! Hereafter you work the cables on even rounds = RS row.

Armholes, bind-off

Work stitches on back until there are 3 (3, 4, 4) stitches left before marker at the beginning of the round, bind off 6 (6, 8, 8) stitches, continue working front piece until there are 3 (3, 4, 4) stitches left before marker in the side, bind off 6 (6, 8, 8) stitches = 54 (62, 68, 76) stitches and work back piece.

Back piece

Is worked over 54 (62, 68, 76) stitches.

Armholes, decreases

WS: Bind off 1 stitch, work the rest of the stitches on back piece.

RS: Bind off 1 stitch, work the rest of the stitches on back piece.

Repeat these 2 rows until you have bound off 4 (5, 6, 7) stitches in each side: 46 (52, 56, 62) stitches.

Continue until armhole measures 16 (17, 18, 19) cm. Finish with a WS row.

Bias shoulders

RS: work until there are 4 stitches left on sleeve side, wrap and turn,

WS: work until there are 4 stitches left on sleeve side, wrap and turn,

RS: work until there are 8 stitches left on sleeve side, wrap and turn,

WS: work until there are 8 stitches left on sleeve side, wrap and turn,

RS: work until there are 10 (12, 13, 15) stitches left on sleeve side,

Continue working over these 10 (12, 13, 15) stitches, and work the wrapped stitches as 1 stitch. Break yarn and slip the stitches for the shoulder on a stitch holder.

WS: attach yarn to and work until there are 10 (12, 13, 15) stitches left on sleeve side.

Continue working over these 10 (12, 13, 15) stitches, and work the wrapped stitches as 1 stitch. Break yarn and slip the stitches for the shoulder on a stitch holder.

Neck

Slip the 26 (28, 30, 32) stitches for the neck on to a stitch holder.

Front piece

Is worked over 54 (62, 68, 76) stitches.

NB! Hereafter you work the cables on even rounds = RS row.

Armholes, decreases

WS: Bind off 1 stitch, work the rest of the pattern.

RS: Bind off 1 stitch, work the rest of the pattern.

Repeat these 2 rows until you have bound off 4 (5, 6, 7) stitches in each side: 46 (52, 56, 62) stitches.

NB! Don't work the outmost cables on size S and M.

Continue until piece measures 38 (29, 40, 41) cm. Finish with a WS row.

Neckline shaping

Left side, worked in rib

Work 18 (21, 23, 25) stitches, and let the remaining stitches rest.

WS: Bind off 2 (2, 2, 2) stitches, and work the rest of the row.

RS: Rib.

WS: Bind off 2 (2, 2, 2) stitches, and work the rest of the row.

RS: Rib.

Hereafter bind off 1 stitch on neck edge until there are 10 (12, 13, 15) stitches left.

Continue until armhole measures 17 (18, 19, 20) cm. Finish with a WS row.

Slip stitches on stitch holder.

Neckline shaping

Slip 10 (10, 10, 12) maker on a stitch holder.

Right side, worked in rib

RS: Attach yarn and work 18 (21, 23, 25) stitches.

WS: Rib.

RS: Bind off 2 (2, 2, 2) stitches, and work the rest of the row.

WS: Rib.

RS: Bind off 2 (2, 2, 2) stitches, and work the rest of the row.

Hereafter bind off 1 stitch on neck edge until there are 10 (12, 13, 15) stitches left.

Continue until armhole measures 17 (18, 19, 20) cm. Finish with a WS row.

Slip stitches on stitch holder.

Assembly

Shoulder seems

Work the shoulder seems together, using the 3-needle bind-off-technique.

