



Kawaii Popsicle - Pillow

No. 1011-201-8258

Difficulty: Intermediate

Crochet hook: 4 mm

Materials: Pillow 50 cm, Pom Pom Maker
45 mm

Measurements: 50 x 50 cm

Abbreviations:

RS - Right side

WS - Wrong side

sl st - slip stitch

sc - single crochet

dc - double crochet

st(s) - stitch(es)

Yarn: Amigo

White (#1) - 1 skein

Black (#12) - 1 skein

Neon Pink (#55) - 1 skein

Lavender (#59) - 1 skein

Light Pink (#57) - 1 skein

Mint (#29) - 1 skein

Primrose (#35) - 4 skeins

Light Turquoise (#21) - 1 skein

Chocolate (#6) - 1 skein

Buy the yarn here:

<http://shop.hobbii.com/kawaii-popsicle-pillow>

The pillow is worked using the corner to corner method “C2C”.

The pattern includes a diagram as well as a description of each row, so you can easily keep track of how many pixels/squares of each color you have to make. If there aren't given a number after the color, you only make 1 pixel/square of that color.

The arrows below show in which direction you work, relative to the RS. You begin in the lower right corner. We recommend that you weave in the ends as you go, so you don't have to deal with all the loose threads at the end☺

If you don't like keeping track of a large number of different skeins, you can make it easier by winding a part of the yarn onto a clothespin. Then you can simply clamp the corresponding colors to the work while not in use, to avoid them getting tangled up as you work.

Front

- ← **Row 1 [RS]:** Primrose
- **Row 2 [WS]:** (Primrose) x 2
- ← **Row 3 [RS]:** (Primrose) x 3
- **Row 4 [WS]:** (Primrose) x 4
- ← **Row 5 [RS]:** (Primrose) x 5
- **Row 6 [WS]:** (Primrose) x 6
- ← **Row 7 [RS]:** (Primrose) x 7
- **Row 8 [WS]:** (Primrose) x 8
- ← **Row 9 [RS]:** (Primrose) x 9
- **Row 10 [WS]:** (Primrose) x 10
- ← **Row 11 [RS]:** (Primrose) x 11
- **Row 12 [WS]:** (Primrose) x 12
- ← **Row 13 [RS]:** (Primrose) x 13
- **Row 14 [WS]:** (Primrose) x 14
- ← **Row 15 [RS]:** (Primrose) x 15
- **Row 16 [WS]:** (Primrose) x 16
- ← **Row 17 [RS]:** (Primrose) x 17
- **Row 18 [WS]:** (Primrose) x 18
- ← **Row 19 [RS]:** (Primrose) x 9, (Mint) x 2, (Primrose) x 8
- **Row 20 [WS]:** (Primrose) x 8, (Mint) x 3, (Primrose) x 9
- ← **Row 21 [RS]:** (Primrose) x 9, (Mint) x 4, (Primrose) x 3, (Chocolate) x 2, (Primrose) x 3
- **Row 22 [WS]:** (Primrose) x 3, (Chocolate) x 3, (Primrose) x 2, (Mint) x 5, (Primrose) x 9
- ← **Row 23 [RS]:** (Primrose) x 9, (Mint) x 6, Primrose, (Chocolate) x 3, (Primrose) x 4
- **Row 24 [WS]:** (Primrose) x 4, (Chocolate) x 4, (Mint) x 7, (Primrose) x 9
- ← **Row 25 [RS]:** (Primrose) x 9, Light Turquoise, (Mint) x 7, (Chocolate) x 3, (Primrose) x 5
- **Row 26 [WS]:** (Primrose) x 6, (Chocolate) x 2, (Mint) x 7, (Light Turquoise) x 2, (Primrose) x 9
- ← **Row 27 [RS]:** (Primrose) x 9, Light Turquoise, Light Pink, Light Turquoise, (Mint) x 7, Chocolate, (Primrose) x 7
- **Row 28 [WS]:** (Primrose) x 8, (Mint) x 7, Light Turquoise, (Light Pink) x 2, Light Turquoise, (Primrose) x 9
- ← **Row 29 [RS]:** (Primrose) x 9, (Light Turquoise) x 2, Light Pink, (Light Turquoise) x 2, (Mint) x 7, (Primrose) x 8

- **Row 30 [WS]:** (Primrose) x 8, (Mint) x 7, (Light Turquoise) x 2, (Black) x 2, (Light Turquoise) x 2, (Primrose) x 9
- ← **Row 31 [RS]:** (Primrose) x 9, (Light Turquoise) x 2, (Black) x 3, (Light Turquoise) x 2, (Mint) x 7, (Primrose) x 8
- **Row 32 [WS]:** (Primrose) x 8, (Mint) x 7, (Light Turquoise) x 3, (Black) x 2, (Light Turquoise) x 3, (Primrose) x 9
- ← **Row 33 [RS]:** (Primrose) x 9, Neon Pink, (Light Turquoise) x 2, Black, White, Black, (Light Turquoise) x 3, (Mint) x 7, (Primrose) x 8
- **Row 34 [WS]:** (Primrose) x 8, (Mint) x 7, (Light Turquoise) x 4, (Black) x 2, (Light Turquoise) x 2, (Neon Pink) x 2, (Primrose) x 9
- ← **Row 35 [RS]:** (Primrose) x 9, (Neon Pink) x 3, (Light Turquoise) x 4, (Black) x 2, (Light Turquoise) x 2, (Mint) x 6, (Primrose) x 9
- **Row 36 [WS]:** (Primrose) x 9, (Mint) x 6, (Light Turquoise) x 2, Black, (Light Turquoise) x 5, (Neon Pink) x 4, (Primrose) x 9
- Corner
- ← **Row 37 [RS]:** (Primrose) x 8, (Neon Pink) x 5, (Light Turquoise) x 8, (Mint) x 5, (Primrose) x 9
- **Row 38 [WS]:** (Primrose) x 9, (Mint) x 4, (Light Turquoise) x 3, Black, (Light Turquoise) x 4, (Neon Pink) x 5, (Primrose) x 8
- ← **Row 39 [RS]:** (Primrose) x 7, (Neon Pink) x 6, (Light Turquoise) x 8, (Mint) x 3, (Primrose) x 9
- **Row 40 [WS]:** (Primrose) x 9, (Mint) x 2, (Light Turquoise) x 2, (Black) x 2, (Light Turquoise) x 4, (Neon Pink) x 6, (Primrose) x 7
- ← **Row 41 [RS]:** (Primrose) x 6, (Neon Pink) x 7, (Light Turquoise) x 3, (Black) x 3, Light Pink, Light Turquoise, Mint, (Primrose) x 9
- **Row 42 [WS]:** (Primrose) x 9, Light Turquoise, (Light Pink) x 2, (Black) x 2, (Light Turquoise) x 3, (Neon Pink) x 7, (Primrose) x 6
- ← **Row 43 [RS]:** (Primrose) x 5, (Neon Pink) x 8, (Light Turquoise) x 2, Black, White, Black, Light Pink, Light Turquoise, (Primrose) x 9
- **Row 44 [WS]:** (Primrose) x 9, (Light Turquoise) x 2, (Black) x 2, (Light Turquoise) x 2, (Neon Pink) x 8, (Primrose) x 5
- ← **Row 45 [RS]:** (Primrose) x 4, (Neon Pink) x 9, (Light Turquoise) x 5, (Primrose) x 9
- **Row 46 [WS]:** (Primrose) x 9, (Light Turquoise) x 4, (Neon Pink) x 9, (Primrose) x 4
- ← **Row 47 [RS]:** (Primrose) x 4, (Neon Pink) x 9, (Light Turquoise) x 3, (Primrose) x 9
- **Row 48 [WS]:** (Primrose) x 9, (Light Turquoise) x 2, (Neon Pink) x 10, (Primrose) x 3
- ← **Row 49 [RS]:** (Primrose) x 3, (Neon Pink) x 10, Light Turquoise, (Primrose) x 9
- **Row 50 [WS]:** (Primrose) x 9, (Neon Pink) x 10, (Primrose) x 3
- ← **Row 51 [RS]:** (Primrose) x 3, (Neon Pink) x 9, (Primrose) x 9
- **Row 52 [WS]:** (Primrose) x 9, (Neon Pink) x 8, (Primrose) x 3
- ← **Row 53 [RS]:** (Primrose) x 3, (Neon Pink) x 7, (Primrose) x 9
- **Row 54 [WS]:** (Primrose) x 9, (Neon Pink) x 5, (Primrose) x 4
- ← **Row 55 [RS]:** (Primrose) x 17
- **Row 56 [WS]:** (Primrose) x 16
- ← **Row 57 [RS]:** (Primrose) x 15
- **Row 58 [WS]:** (Primrose) x 14
- ← **Row 59 [RS]:** (Primrose) x 13
- **Row 60 [WS]:** (Primrose) x 12
- ← **Row 61 [RS]:** (Primrose) x 11
- **Row 62 [WS]:** (Primrose) x 10
- ← **Row 63 [RS]:** (Primrose) x 9
- **Row 64 [WS]:** (Primrose) x 8
- ← **Row 65 [RS]:** (Primrose) x 7
- **Row 66 [WS]:** (Primrose) x 6

- ← **Row 67 [RS]:** (Primrose) x 5
- **Row 68 [WS]:** (Primrose) x 4
- ← **Row 69 [RS]:** (Primrose) x 3
- **Row 70 [WS]:** (Primrose) x 2
- ← **Row 71 [RS]:** Primrose

Back

- **Row 1 [WS]:** Primrose
- ← **Row 2 [RS]:** (Primrose) x 2
- **Row 3 [WS]:** (Primrose) x 3
- ← **Row 4 [RS]:** (Primrose) x 4
- **Row 5 [WS]:** (Mint) x 5
- ← **Row 6 [RS]:** (Mint) x 6
- **Row 7 [WS]:** (Mint) x 7
- ← **Row 8 [RS]:** (Mint) x 8
- **Row 9 [WS]:** (Primrose) x 9
- ← **Row 10 [RS]:** (Primrose) x 10
- **Row 11 [WS]:** (Primrose) x 11
- ← **Row 12 [RS]:** (Primrose) x 12
- **Row 13 [WS]:** (Light Turquoise) x 13
- ← **Row 14 [RS]:** (Light Turquoise) x 14
- **Row 15 [WS]:** (Light Turquoise) x 15
- ← **Row 16 [RS]:** (Light Turquoise) x 16
- **Row 17 [WS]:** (Primrose) x 17
- ← **Row 18 [RS]:** (Primrose) x 18
- **Row 19 [WS]:** (Primrose) x 19
- ← **Row 20 [RS]:** (Primrose) x 20
- **Row 21 [WS]:** (Neon Pink) x 21
- ← **Row 22 [RS]:** (Neon Pink) x 22
- **Row 23 [WS]:** (Neon Pink) x 23
- ← **Row 24 [RS]:** (Neon Pink) x 24
- **Row 25 [WS]:** (Primrose) x 25
- ← **Row 26 [RS]:** (Primrose) x 26
- **Row 27 [WS]:** (Primrose) x 27
- ← **Row 28 [RS]:** (Primrose) x 28
- **Row 29 [WS]:** (Lavender) x 29
- ← **Row 30 [RS]:** (Lavender) x 30
- **Row 31 [WS]:** (Lavender) x 31
- ← **Row 32 [RS]:** (Lavender) x 32
- **Row 33 [WS]:** (Primrose) x 33
- ← **Row 34 [RS]:** (Primrose) x 34
- **Row 35 [WS]:** (Primrose) x 35
- ← **Row 36 [RS]:** (Primrose) x 36

Corner

- **Row 37 [WS]:** (Mint) x 35
- ← **Row 38 [RS]:** (Mint) x 34
- **Row 39 [WS]:** (Mint) x 33
- ← **Row 40 [RS]:** (Mint) x 32

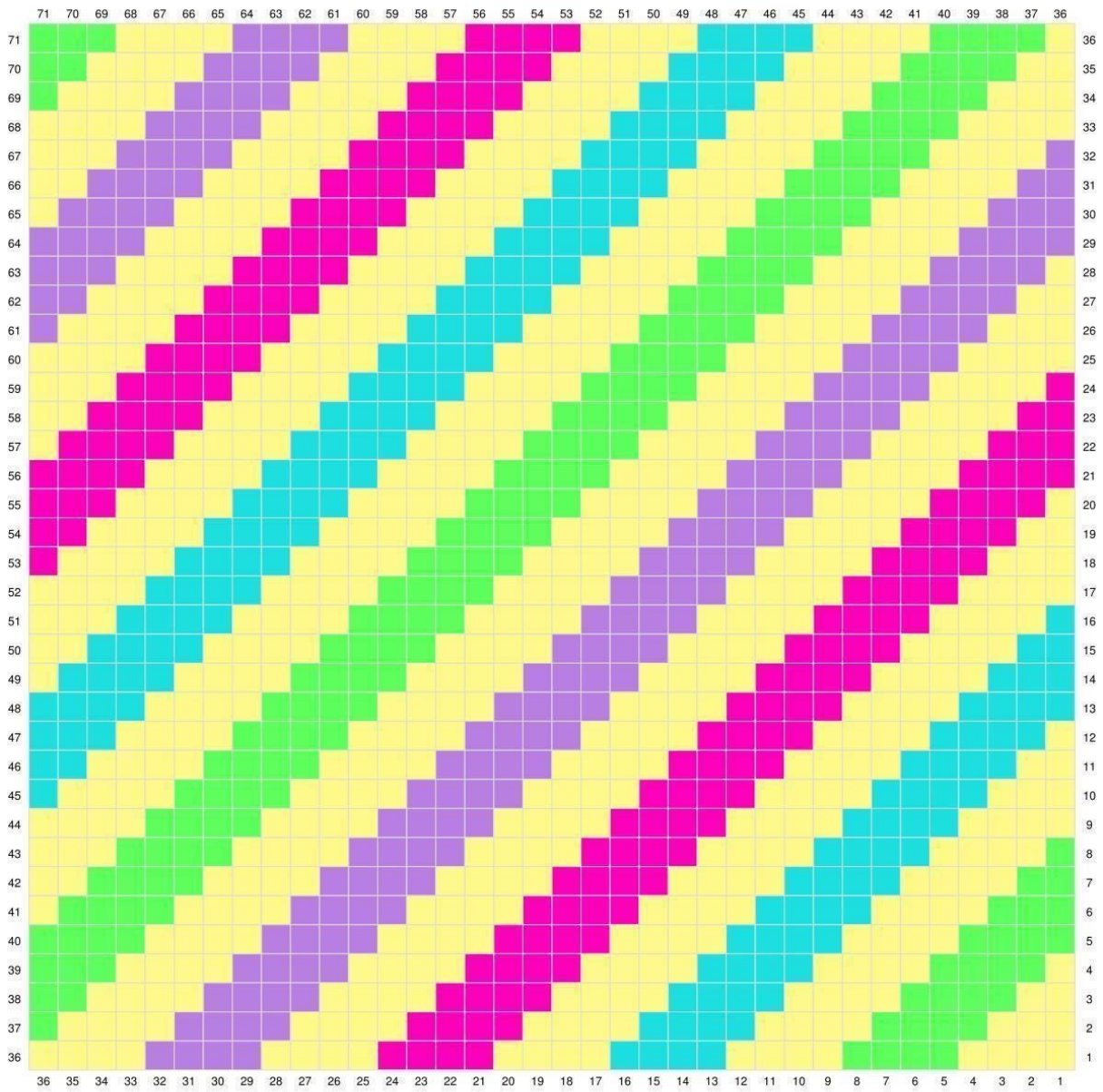
- **Row 41 [WS]:** (Primrose) x 31
- ← **Row 42 [RS]:** (Primrose) x 30
- **Row 43 [WS]:** (Primrose) x 29
- ← **Row 44 [RS]:** (Primrose) x 28
- **Row 45 [WS]:** (Light Turquoise) x 27
- ← **Row 46 [RS]:** (Light Turquoise) x 26
- **Row 47 [WS]:** (Light Turquoise) x 25
- ← **Row 48 [RS]:** (Light Turquoise) x 24
- **Row 49 [WS]:** (Primrose) x 23
- ← **Row 50 [RS]:** (Primrose) x 22
- **Row 51 [WS]:** (Primrose) x 21
- ← **Row 52 [RS]:** (Primrose) x 20
- **Row 53 [WS]:** (Neon Pink) x 19
- ← **Row 54 [RS]:** (Neon Pink) x 18
- **Row 55 [WS]:** (Neon Pink) x 17
- ← **Row 56 [RS]:** (Neon Pink) x 16
- **Row 57 [WS]:** (Primrose) x 15
- ← **Row 58 [RS]:** (Primrose) x 14
- **Row 59 [WS]:** (Primrose) x 13
- ← **Row 60 [RS]:** (Primrose) x 12
- **Row 61 [WS]:** (Lavender) x 11
- ← **Row 62 [RS]:** (Lavender) x 10
- **Row 63 [WS]:** (Lavender) x 9
- ← **Row 64 [RS]:** (Lavender) x 8
- **Row 65 [WS]:** (Primrose) x 7
- ← **Row 66 [RS]:** (Primrose) x 6
- **Row 67 [WS]:** (Primrose) x 5
- ← **Row 68 [RS]:** (Primrose) x 4
- **Row 69 [WS]:** (Mint) x 3
- ← **Row 70 [RS]:** (Mint) x 2
- **Row 71 [WS]:** Mint

Enjoy!

Super Cute Design







CORNER TO CORNER

Row 1



1. Begin with ch 5.



2. Make 1 dc in the 3rd ch from the hook.



3. Make 1 dc in each of the next 2 sts. You have now made your first pixel/square.

Row 2



1. Ch 5.



2. Make 1 dc in the 3rd ch from the hook.



3. Make 1 dc in each of the next 2 sts. You have now made your next pixel/square.



4. Now, the pixel is connected to the first one. Do this by turning the pixel and making 1 sl st into the left corner of the first pixel. The picture shows the connected pixels.



5. Ch 2 (takes the place of the 1st dc)



6. Make 3 dc around the ch-sp you just made your sl st into. You now have 2 pixels on the second row.

Row 3



1. Ch 5.



2. Make 1 dc in the 3rd st from the hook and then 1 dc in each of the next 2 sts.



3. Make 1 sl st into the corner of the pixel below.



4. Ch 2 and make 3 dc into the ch-sp you made your sl st into.



5. Make a sl st into the pixel beside it. Ch 2. Work 3 dc into the ch-sp you made your sl st into. You now have 3 pixels and row 3 is done.

Decreases for corners



1. Instead of ch 5 at the end of the row, make 3 sl sts along the edge of the last pixel.



2. Continue making pixels in the same manner as before.



3. Here, you can see how you decrease at the end of a row by connecting the pixels with a sl st.

Bow

Using Lavender

Make a Magic Ring, but do not tighten yet. Work this into the ring:

Ch 4, 4 dc, ch 4, 1 sl st, ch 4, 4 dc, ch 4, 1 sl st.

Now you can tighten the magic ring completely.

Cut the yarn, but leave a 20 cm long tail end. Wind it around the middle of the bow a couple of times, until it looks how you want it to.

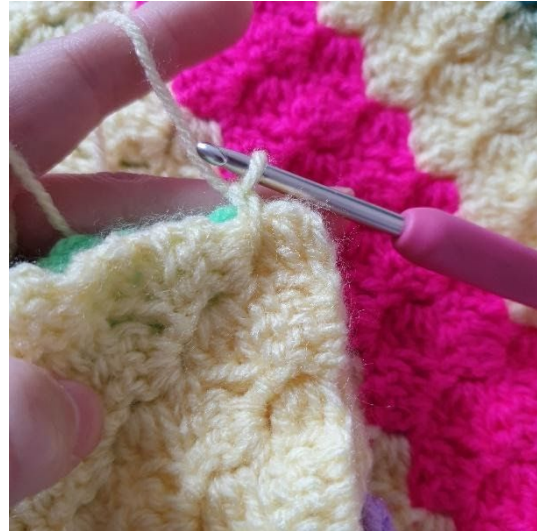
Sew the bow onto the side of the pink part of the popsicle.



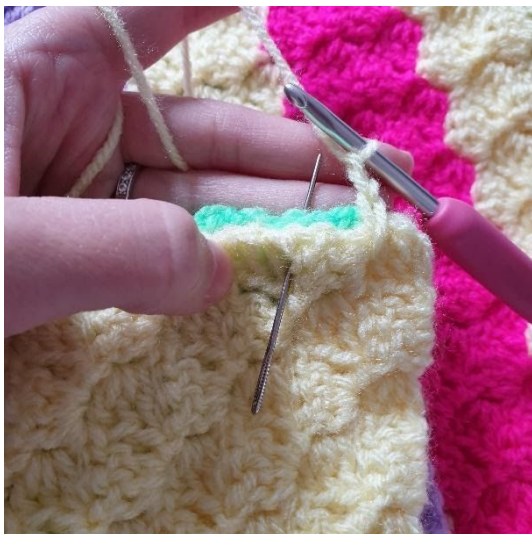
Finishing



1. Lay the two pieces on top of each other, wrong sides together.



2. Pull the yarn up between 2 pixels.



3. Ch 2.



4. Make a sl st between the next 2 pixels.



5. Repeat this pattern of ch 2, sl st between pixels.



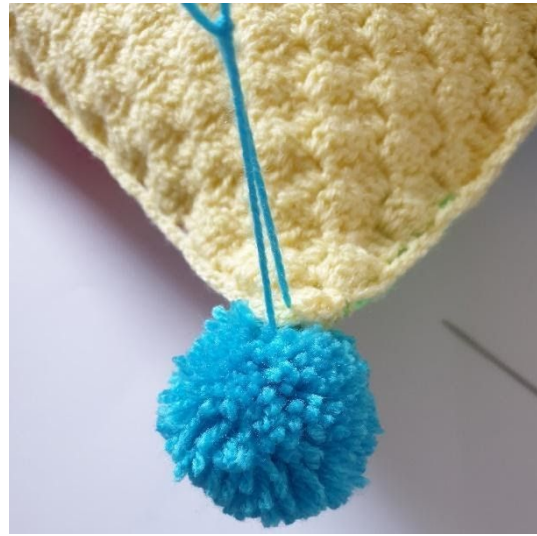
6. Make 1 sc in the corner. Continue with ch 2, sl st all around the pillowcase.



7. Place the pillow into the pillowcase. Continue closing up the seam of the pillowcase and end with a sl st.



Make 4 pom-poms.



Sew a pom-pom to each corner of the pillow.