



# Japis - Scarf

No. 2004-201-6091

## Materials

2 skeins of Magic Sock Wool co. 24

2 skeins of Kid Silk co. 16

Size 4 (3.5 mm) needle

Circular needle size 4 (3.5 mm) for the edge

## Yarn quality

**Magic sock wool**, Happy Sheep

70% wool, 30% polyamide/ 3.5 oz. (100 g) = 437 yds (400 meter)

**Kid Silk**, Hobbii

70% Kid Mohair, 30% Silk/ 0.9 oz. (25 g) = 213 yds (195 meter)

## Gauge

21 sts and 60 rows on 4" (10 cm) in garter and stripes

## Buy the yarn here

<http://shop.hobbii.com/japis-scarf>

## Size

One size

## Measurements

Width: approx. 17.3" (44 cm)

Length: approx. 86.6" (220 cm)

## Pattern information

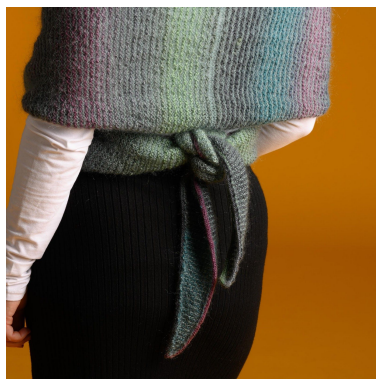
The scarf is knitted by alternating between 2 rows of Magic Sock Wool and 2 rows of Kid Silk.

First, increase in the one side until you reach the middle. After that, decrease in the same side. Increase until you've used 1 skein of Kid Silk.

At last, knit an i-cord edge with Magic Sock Wool around the scarf.

## Hashtags for social media

#hobbiidesign #hobbijapis-tørklæde



Happy knitting!

## Pattern

Cast on 3 sts with Magic Sock Wool and knit 1 row.

Switch to Kid Silk and knit 2 rows.

After this, knit in stripes and increase at the end of the first row:

1st row: \*Knit, in Magic Sock Wool, to 1 st left, knit through the front and back of the last st = 1 st inc = 4 sts all in all.

2nd row: Knit, in Magic Sock Wool, across.

3rd row: Knit, in Kid Silk, across.

4th row: Knit, in Kid Silk, across.

5th row: Knit, in Magic Sock Wool, across.

6th row: Knit, in Magic Sock Wool, across.

7th row: Knit, in Kid Silk, across.

8th row: Knit, in Kid Silk, across.

Repeat these 8 rows.

Continue with increases on every 8th row until you've knitted 1 skein of Kid Silk = approx. 90 – 94 sts.

Knit 2 extra rows in one of the colors to mark the center of the scarf.

After this, continue with stripes and decreases in the same side as the increases:

Knit to 2 sts left, k2tog = 1 st dec.

Knit 7 rows of stripes.

Repeat these 8 rows.

Decrease until you have 3 sts. Knit 2 rows. Cast off.

**Icord-edge**, knitted in Magic Sock Wool.

### **Slanted sides**

Knit up sts from the right side along the 2 slanted sides, using the circular needle.

Cut the yarn. Move the sts to the opposite tip (of the knitting needle) and knit from the right side.

Cast on 3 sts using a knitted cast on.

\*k2, k2tog tbl (1 st from the right needle and 1 st from the left needle), place 3 sts back on to the left needle\*; repeat from \* to \* until all sts on the needle has been knitted. Set the 3 sts to rest.

NOTE tighten the yarn a bit before knitting the first st.

### **Straight side**

Knit up sts from the right side along the straight side, using the circular needle. Cut the yarn. Move the sts to the opposite tip (of the knitting needle) and knit from the right side.

Place the 3 resting sts on the left needle.

\*k2, k2tog tbl, place 3 sts back on to the left needle\*; repeat from \* to \* until all sts on the needle has been knitted.

Sew the edge together in the corner using Kitchener stitches.

### **Finish**

Press the finished work and edge.