



Bromus Scarf

No. 2003-193-3266

Materials

Circular needle US size 4 (3,5 mm) 31.5 inches (80 cm)

Crochet hook US size C/2 (3 mm) for making tassels

3 skeins of 1.8 oz. (50 g) of Soft Alpaca col. 03 **A** (Beige)

4 skeins of 1.8 oz. (50 g) of Soft Alpaca col. 06 **B** (dark gray)

2 skeins of 1.8 oz. (50 g) of Soft Alpaca col. 08 **C** (dark brown)

Measurements

Width: 9.4 inches (24 cm)

Length: 65 inches (165 cm) without tassels

Buy the yarn here

<http://shop.hobbii.com/bromus-scarf>

Knitting gauge

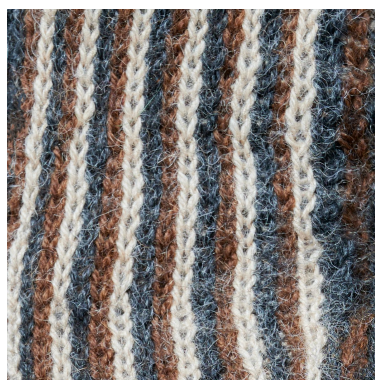
24 stitches on 4" (10 cm)

28 rounds on 4" (10 cm)

Pattern information

The scarf is knitted in the round on a circular needle using the magic loop technique.

It is up to you, if you prefer knitting with 2 or 3 colors when following the charts. If you only knit with 2 colors, you can embroider the 3rd color (dark brown) on the scarf in the end.



Scarf

Cast on 112 sts using the figure 8 cast on technique and color **B**. Knit in the round using the circular needle and the magic loop technique.

Work 3.14 inches (8 cm) of stockinette stitch.

Place a marker at the beginning of the round and after 56 sts.

Follow chart 1 over the first 56 sts and knit after chart 2 when knitting the last 56 sts of the work. Knit until your work measures approx. 62 inches (157 cm) or until the desired length.

Work 3.14 inches (8 cm) of stockinette stitch in color **B**.

Sew the stitches together using the kitchener stitch.

Tassels

Cut 9.4 inches (24 cm) long tassels consisting of 4-5 threads in color **B**.

Fold them in the middle and join them to the edge of the scarf using a crochet hook. Attach approx. 20 tassels to each end of the scarf.

Happy knitting!

Chart 1

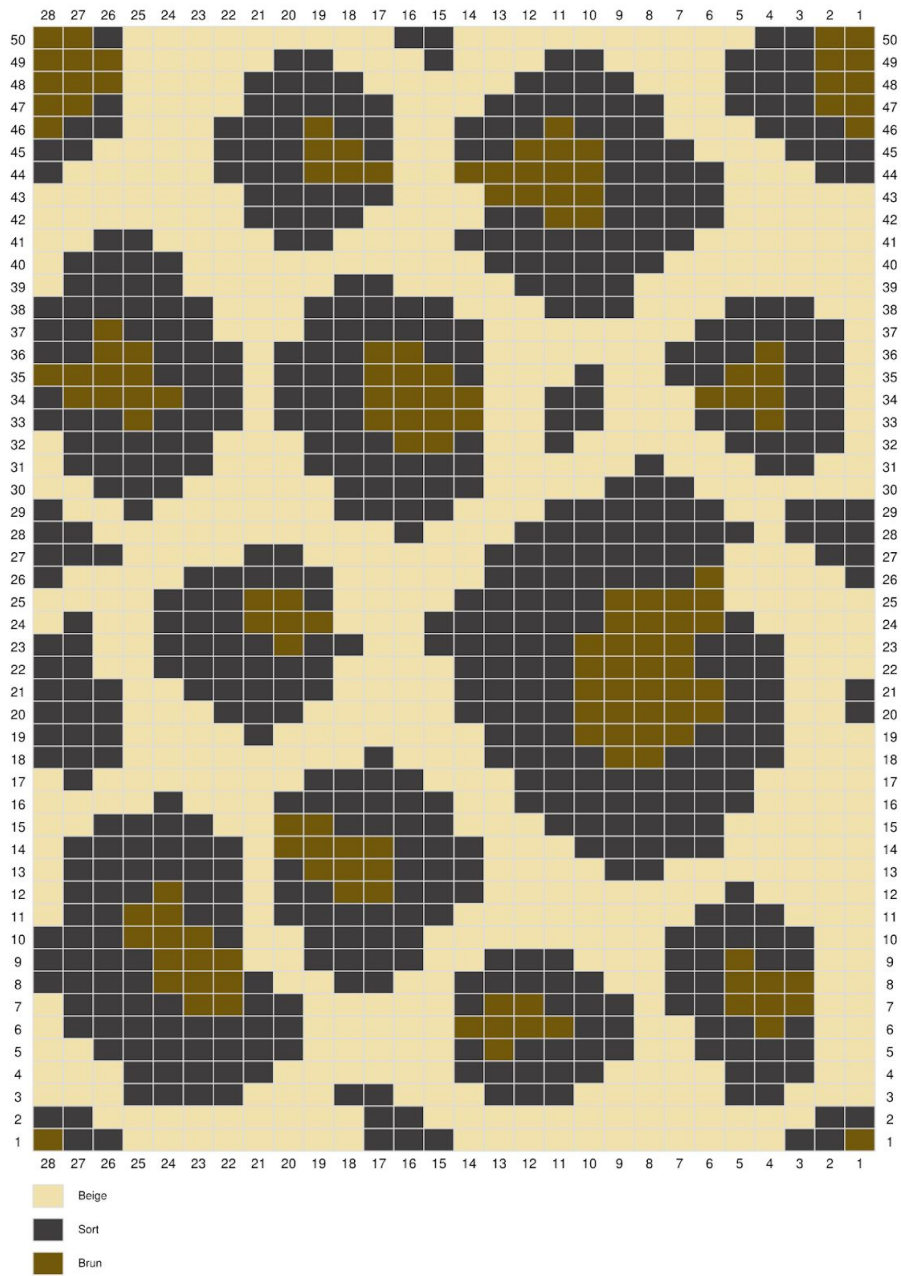


Chart 2

