



Bromus Cardigan

No. 2003-193-3661

Materials

Circular needle size 3,5 mm (US4) 80 cm
Optionally: Double pointed needles size 3,5 mm (US4) for the sleeves.

7 Buttons

3 (3) 4 (5) ball of 50 g Soft Alpaca col. 03 **A**
5 (5) 6 (7) ball of 50 g Soft Alpaca col. 06 **B**
2 (2) 3 (3) ball of 50 g Soft Alpaca col. 08 **C**

Size

S (M) L (XL)

Measurements

Width 50 (52) 54 (56) cm
Length 55 cm

Gauge

24 stitches = 10 cm
28 rounds = 10 cm

Pattern Information

This cardigan is worked in the round on circular needles and the front and both armholes are hereafter cut open.

Work steek stitches in center of front piece. These will be cut open later. You will also work steek stitches on each side, which are cut open to fit sleeves.

You can choose to work the diagram with 2 or 3 colors. If you only work with 2, then you can embroider the 3rd color (**color C**) on to the cardigan in the end.

Purchase your yarn here

<http://shop.hobbii.com/bromus-cardigan>



Body

CO 235 (245) 255 (265) stitches with **color B**. The first 5 stitches on the round are steek stitches. Insert a marker on each side of the 5 stitches, to ensure they are not confused with the other stitches, which are worked according to diagram. When **color A** and **C** are added, work the steek stitches in alternate colors to secure them.

Work rib in the round *knit 1, purl 1* until piece measures 5 cm.

Continue in the round in stockinette stitch according to diagram, see page 6.

Divide the body as follows

5 steek stitches in front center, 56 front piece stitches, 3 (8) 13 (18) side seam stitches (these stitches are worked in **color B**), 112 back piece stitches, 5 (8) 13 (18) side seam stitches and 56 front piece stitches = 2 repeats of the diagram on each front piece and 4 repeats of the diagram on the back piece.

Continue in stockinette stitch and pattern until piece measures 53 cm. Work another 2 cm with **color B** in stockinette stitch.

Bind off all stitches loosely.

Sleeves

CO 48 (50) 52 (54) stitches with **color B** and work 5 cm rib *knit 1, purl 1*.

Work one round in stockinette stitch and at the same time, increase evenly to 58 stitches (all sizes).

Insert a marker at the beginning of round. Work the first stitch in **color B**, repeat the diagram 2 times and work the last stitch in **color B**.

Continue working the pattern according to diagram and in stockinette stitch, at the same time increase using **color B** on each side of marker to create a gusset under the sleeve.

Increasing

Increase in every 6th round until you have a total of 30 (34) 38 (42) gusset stitches.

Continue without increasing further until sleeve measures 45 cm. Finish with another 2 cm in **color B** and stockinette stitch. Do not break yarn but work a seam allowance.

From this point you work back and forth with **color B**. Work 2 cm in reversed stockinette stitch (purl on RS, knit on WS).

Bind off all stitches loosely.

The seam allowance is sewn on to the inside of sleeve to cover the arm hole cut edge.

Assembly

Sew a zigzag seam on a sewing machine along the front center, the neckline and both armholes.

Then cut all seams open and work edges.

Neck edge

Mark the neckline on front piece by lacing in a contrast thread. Measure approx. 7 cm from bind-off edge and 9-10 cm on each side of steek stitches in center.

Sew a zigzag seam along contrast thread. Cut open with 1- 1,5 cm seam allowance.

The neck edge will be completed on a later stage.

Front bands

With a sewing machine, sew a zigzag seam on each side of the steek stitches = one in the 1st row of the steek stitches and one in the 5th row of steek stitch.

Cut the front open in center stitch in between the 2 seams.

Armholes

Measure the width of sleeve at bind-off edge. Mark the width of sleeve on the body.

Sew 2 zigzag seams on a sewing machine along the steek stitches in each armhole. Cut open in between the 2 seams.

Shoulder seams

Sew the shoulder seams together with Kitchener stitches. Begin at armhole.

Working the edges

Neck edge

Pick up stitches with **color B** along neck edge and work 8 cm rib *knit 1, purl 1*. Fold edge to wrong side and sew it on to inside of piece.

Left front band

Pick up stitches with **color B** along the edge from RS. Skip approx. every 5th stitch, preventing the band from becoming too loose in comparison with body.

Work the stitches in first row as follows: *knit 1 TBL, purl 1 TBL* to close all holes along the edge.

Work rib *knit 1, purl 1* until band measures 3 cm.

Bind off in rib.

Sew on 7 buttons, evenly distributed along the front band.

Right front band

With **color B**, pick up stitches along the edge from RS, just as with left front band.

Work the stitches in first row as follows: *knit 1 TBL, purl 1 TBL* to close all holes along the edge.

Work rib *knit 1, purl 1* until band measures 1,5 cm.

Buttonholes

Insert 7 stitch markers matching the height of the buttons on left front band. Work the buttonholes at each marker as follows: *work 2 stitches together (knit or purl depending on what fits with rib), yarn over*.

Continue working in rib until front band measures 3 cm. Bind off in rib.

Sewing in sleeves

Sew the sleeves on to body from RS with Kitchener stitches and in **color B**. Sew in last round of stockinette stitch on sleeve (before seam allowance).

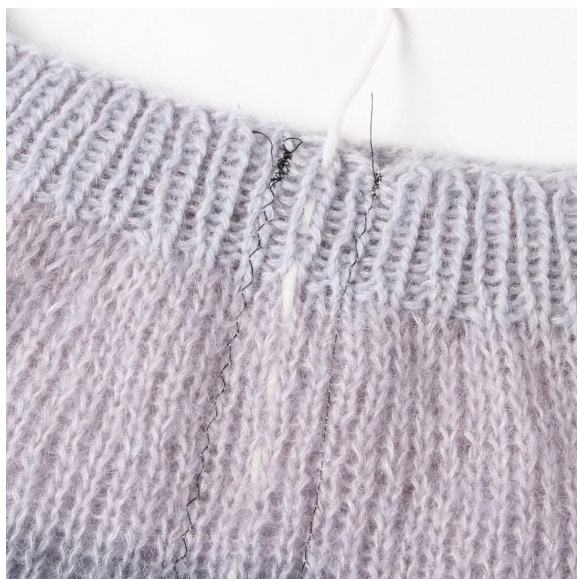
Turn piece inside out and sew seam allowance on to body with overcasting stitches, covering the steek stitches.



1- Mark where the piece will be cut open. Lace a contrast thread along center of piece.



2- With a sewing machine, sew a zigzag seam on both sides of contrast thread.



3- The zigzag seams keep the stitches in place. Be careful that they are not too tight.



4- Remove contrast thread and cut open along center stitch.



5- The edge now looks like this.



6-Pick up stitches along edge from the RS.



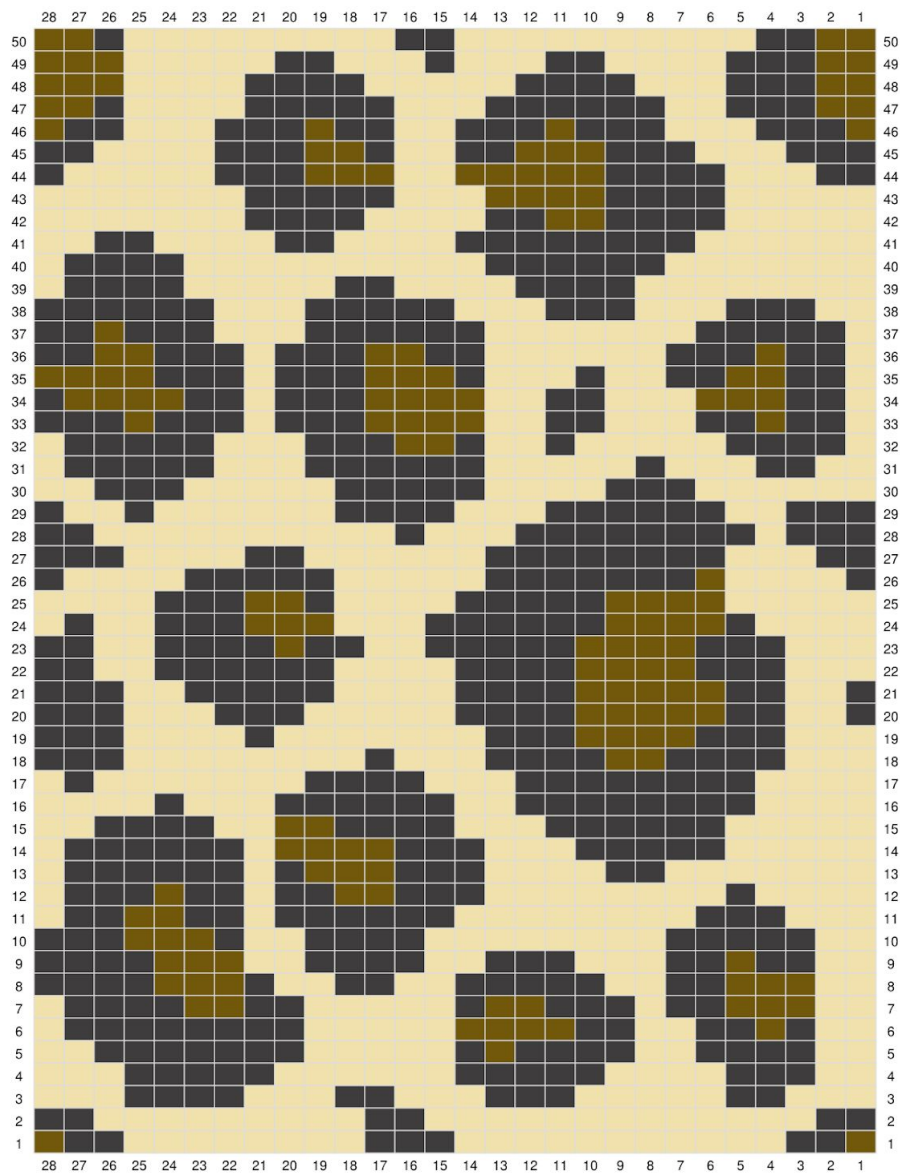
7- Mark where buttons should be placed.



8- Finished.

Diagram

Please pay attention to gauge. Be careful not to tighten the yarn too much on WS of the piece.



Enjoy!