



Frida - Blouse

No. 2004-193-1289

Materials

5 (6, 7, 7, 8) skeins of 1.8 oz (50 g) Soft, Go Handmade color 28

Circular needles 24" and 32" (60 and 80 cm)

US size 2.5 (3 mm)

Circular needles 24" and 39" (60 and 100 cm)

US size 4 (3,5 mm)

opt. crochet hook US size C/2-D/3 (3 mm) for the neckline

Size

S (M, L, XL, XXL)

Measurements

Width: approx. 18.5" (20.5", 23", 25", 27") or 47 (52, 58, 63, 68) cm, wide model

Length, mid front: approx. 20" (20.5", 21", 22", 22.5") or 51 (52, 53, 55, 57) cm

Gauge:

Stockinette Stitch:

28 st on 4" (10 cm) on needle 4 (3,5 mm)

Garter Stitch:

23 st on 4" (10 cm) on needle 2.5 (3 mm)

Pattern information

The blouse is a wide, loose fitting model with short sleeves.

The blouse is knit from the top with a ridge edge. After that, increases are made in all st on the next 2 rounds.

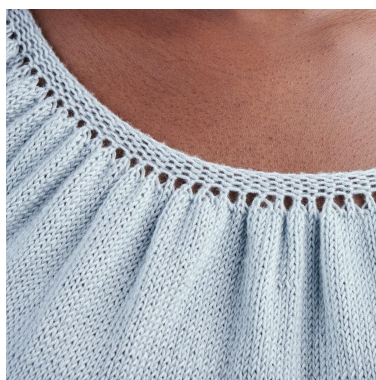
Sleeves and body are finished separately. Decreases are made before the blouse is finished with a ridge edge.

Hashtags for social medias

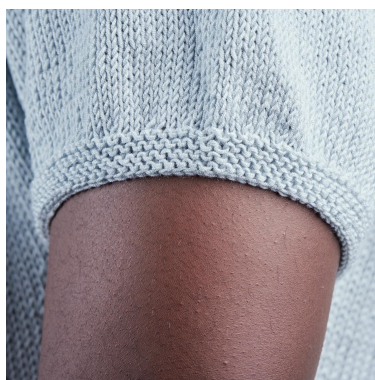
#hobbiidesign #hobbiifrida

Buy the yarn here

<http://shop.hobbii.com/frida-blouse>



Neckline



Brim of sleeve



Brim at waist

Pattern

Yoke

Neckline

Cast on 118 (128, 138, 148, 158) sts on circular needles 32" (80 cm) size 2.5 (3 mm). Knit in the round in garter sts with magic loop: k 1 round, p1 round until you have 4 ridges.

Body

Switch to circular needles size 4 (3,5 mm) and knit stockinette st in the round and increase on the first 2 rounds, like this:

1st round: *k1, yo*. Repeat * to * around = 236 (256, 276, 296, 316) sts.

2nd round: *k1, yo, k tbl, yo*. Repeat * to * around = 472 (512, 552, 592, 632) sts.

3rd round: *k 1, k tbl*. Repeat * to * around = 472 (512, 552, 592, 632) sts.

Continue in stockinette st until the work measures 7.5" (8", 8.5", 8.7", 9") or 19 (20, 21, 22, 23) cm.

Here the work is separated to sleeves and body

Place a marker at the start of the round.

Place a marker after 106 (110, 114, 120, 126) sts for sleeve, after that a marker after 130 (146, 162, 176, 190) sts for body. Repeat this one more time.

Sleeves

Knit approx 0.8" (2 cm) stockinette st in the round on the sleeve.

Brim of sleeve

Switch to circular needles size 2.5 (3 mm) and make even decreases to approx.. 74 (78, 82, 86,90) sts (approx. k2, k2tog).

Knit 4 ridges of garter st.

Cast off.

Knit the other sleeve the same.

Body

Knit stockinette sts around on the 260 (292, 324, 352,380) sts on the body on circular needles size 4 (3,5 mm).

Knit till the body measures approx. 11.8" (30 cm) from the armhole or till you reach the desired length to the waist.

Brim at waist

Switch to circular needles size 2.5 (3 mm) and make even decreases to 202 (226, 252, 276, 300) sts (approx. k2, k2tog) = approx. 17 (19", 22", 24", 26") or 44 (49, 55, 60, 65) cm.

Knit 4 ridges of garter st.

Cast off.

NB. Opt. work a round of sc around the neckline so it doesn't give.

Happy knitting.