



Esther Sweater

No. 2003-193-2584

Materials:

Double pointed needle 7 (4,5 mm) and 8 (5 mm)

Circular needle 7 (4,5 mm) 32"

Circular needle 8 (5 mm) 32"

5 (5) 6 skeins of Highland Wool color 37

5 (5) 5 skeins of Super Kid Silk color 36

Size:

S/M (M/L) L/XL

Measurements:

Width approx.: 18" (19") 20½" or 46 (48) 52 cm

Length approx.: 17½" (18") 18½" or 45 (46) 47 cm

Gauge:

17 sts in 4" (10 cm)

24 rows in 4" (10 cm)

It's important that the height of the sts fits the gauge. Because the sweater is knit across, this is the factor that decides if the finished work fits.

Buy the yarn here:

<http://shop.hobbii.com/esther-sweater>

Pattern information:

The sweater is knit from sleeve to sleeve. You work with 1 strand of each quality. In the end you pick up sts along the neckline and for the ribbing in the waist.

Techniques

You can find videos of the techniques used in the pattern here:

Pintuck -

<https://www.youtube.com/watch?v=wqp3Jv9PKWw>

Magic loop -

<https://www.youtube.com/watch?v=FtLallfMHMg&t=>

Stretchy bind off -

<https://www.youtube.com/watch?v=qzSYcnP6XzI>

Hashtags for social media

#hobbiidesign

#hobbiiesther



Cable work along the sleeve

Neckline

Pintuck and ribbing

Sleeve

Cast on 38 (40) 42 sts on double pointed needle US size 7 (4.5 mm) and knit ribbing in the round *k1, p1* for 4" (10 cm).

Switch to double pointed needle US size 8 (5 mm). Place a marker at the beginning of the round.

Pintuck – see link

Knit 8 rounds of stockinette stitch. Knit the sts on the needles joint with the sts on the 4th round after switching needles.

Knit in the round in pattern by diagram.

Make increases evenly on the first round to 56 sts.

Sleeve

Place a marker at the beginning of the round and on each side of the 28 sts in the middle that are knit by diagram.

Increase on each side of the marker at the beginning of the round on every 4th round like this:

K1, pick up strand and knit into the back, k to 1 st left before marker, pick up strand and knit into the back.

On the next round, make cables in the 2 x 14 sts shown in the diagram.

Increase to 100 sts. Knit to the sleeve measures approx. 19" (48 cm)

Body

The body is knit back and forth on the circular needle in stockinette st on each side of the cable work.

Cast on 25 (26) 27 sts with a knitted cast on for seam.

Turn and purl back over these and the sleeve's sts. Cast on 25 (26) 27 sts with a knitted cast on for the other seam = 150 (152) 154 sts.

Shoulder

Knit until the piece measures 4" (10 cm) from the seam. Finish on a wrong side row.

From the right side, knit to the middle of the sleeve = 14 pattern sts on each side.

The piece is now separated in two so the front and the back is knit separately. They are joined again after the neck by the shoulder. *Pay attention that the diagram fits.*

Front

Decreases, neckline

1. row, right side: knit pattern over the first 14 sts, k2tog, finish row.
2. row, wrong side: p all sts.

Continue making decreases on all right side rows until you have made 11 (12) 13 decreases and the neck measures 5" (5½") 6" or 13 (14) 15 cm from the shoulder.

Increases, neckline

Increase like this on all right side rows: knit pattern over 14 sts, k1, pick up strand and knit into the back, k across.

Increase 11 (12) 13 times and the neckline is 5" (5½") 6" or 13 (14) 15 cm.

Lay aside and knit the back.

Back

Decreases, neckline

1. row, right side: knit to 17 sts left, k2tog, k1, knit pattern over last 14 sts.
2. row, wrong side: p all sts.
3. row, right side: k and pattern over all sts.
4. row, wrong side: p all sts.

Continue decreasing on all right side rows to the neck measures 5" (5½") 6" or 13 (14) 15 cm from the shoulder and you've made 6 (6) 6 decreases.

Increase number of stitches again as in the front – on every 4th row from the right side.

NB Pay attention that the pattern in the diagram fits the front.

Shoulder

Assemble your work and knit over the entire body again. Knit back and forth to the work measures 4" (10 cm), cast off sts in the seam and knit in the round on the sleeve.

Sleeve

Place a marker in the middle under the sleeve. Decrease on each side of the marker.

Decreases

On each side of the marker, you decrease by knitting to 3 sts before marker, *k2tog tbl, k2, k2tog*.

Decrease on every 4th row until you have 56 sts. Knit to same length as the first sleeve.

Cuff and pintuck

Make even decreases to 38 (40) 42 sts.

Knit a pintuck as on the first sleeve.

Switch to needle no. 7 (4.5mm) and knit in the round in ribbing *k1, p1* to the ribbing measures 4" (10 cm)
Cast off using a stretchy bind off.

Assembling

Sew the seam using kitchener stitch.

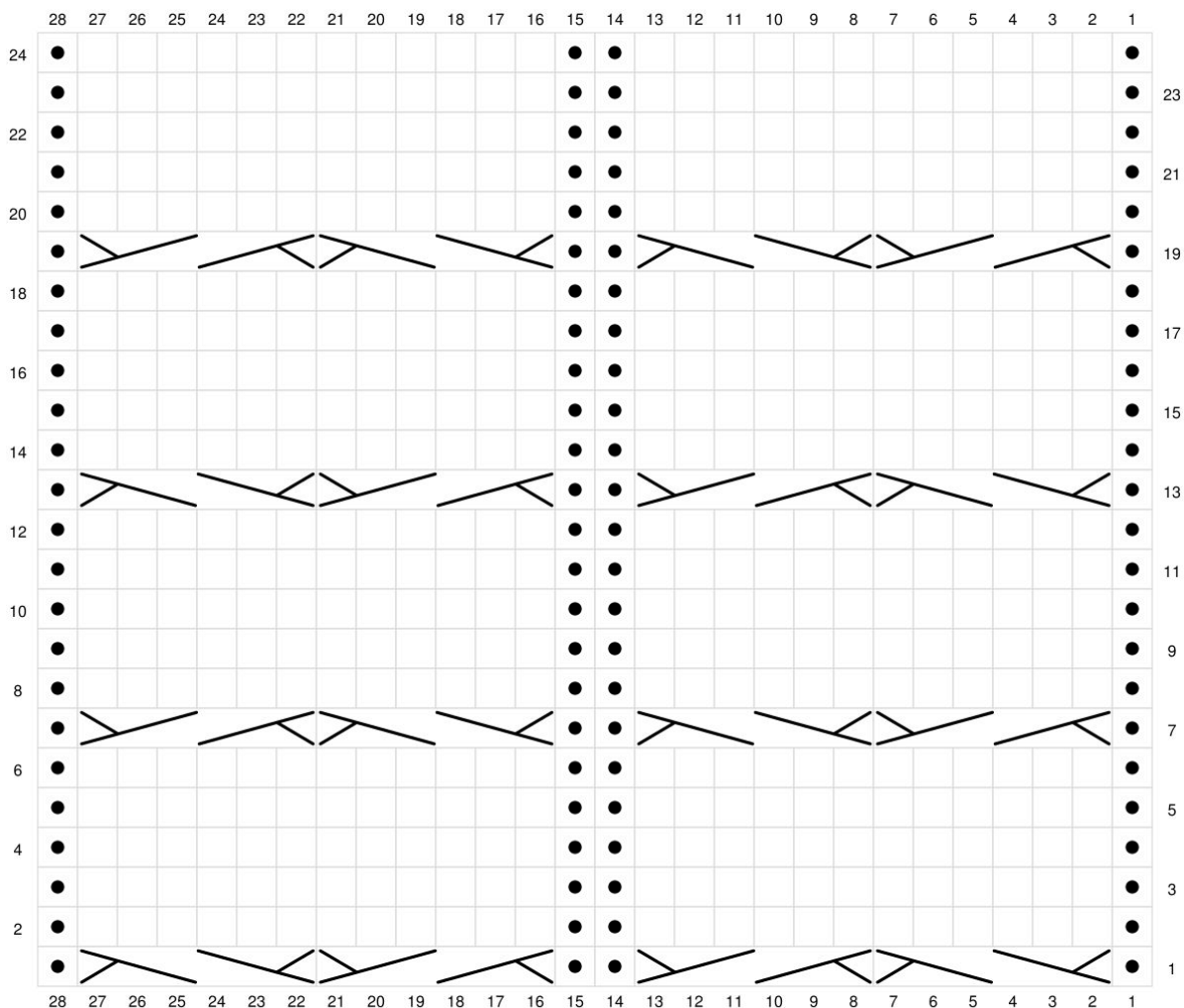
Ribbing in the waist

Pick up sts along the bottom of the sweater using a circular needle no. 7 (4.5 mm). Knit 3" (7 cm) ribbing *k1, p1*. Knit tbl on the first round.
Cast off in ribbing using a stretchy bind off.

Neckline

Pick up sts along the neckline using needle no. 7 (4.5 mm). Purl all sts tbl on the first round.
Purl one more round, cast off purl wise using a stretchy bind off.

Happy knitting!



Knit on the right side (RS), Purl on the wrong side (WS)



Purl on the right side (RS), Knit on the wrong side (WS)



Place 3 stitches on a cable needle on the front side, knit the next 3 stitches, knit the 3 stitches from the cable needle



Place 3 stitches on a cable needle on the back side, knit the next 3 stitches, knit the 3 stitches from the cable needle