

A pattern by:  
Super Cute Design



## Kawaii Rainbow Blanket

No. 1011-192-8249

**Difficulty Level:** Experienced

**Crochet Hook:** G - 4.0 mm

**Yarn:** Amigo

**Blanket size:** 59" x 42" / 150 x 106 cm

Buy the yarn here:

[http://shop.hobbii.com/  
rainbow-kawaii-blanket](http://shop.hobbii.com/rainbow-kawaii-blanket)

**How much yarn do you need?**

White (#1): 1 skein

Black (#12): 2 skeins

Light Pink (#57): 1 skein

Neon pink (#55): 2 skeins

Primrose (#35): 2 skeins

Neon Green (#33): 2 skeins

Light Turquoise (#21): 2 skeins

Neon Coral (#44): 2 skeins

Lavender (#59): 2 skeins

### Abbreviations in this pattern:

**RS** = Right side (front)

**WS** = Wrong side (back)

**sl st** = slip stitch

**sc** = single crochet

**hdc** = half double crochet

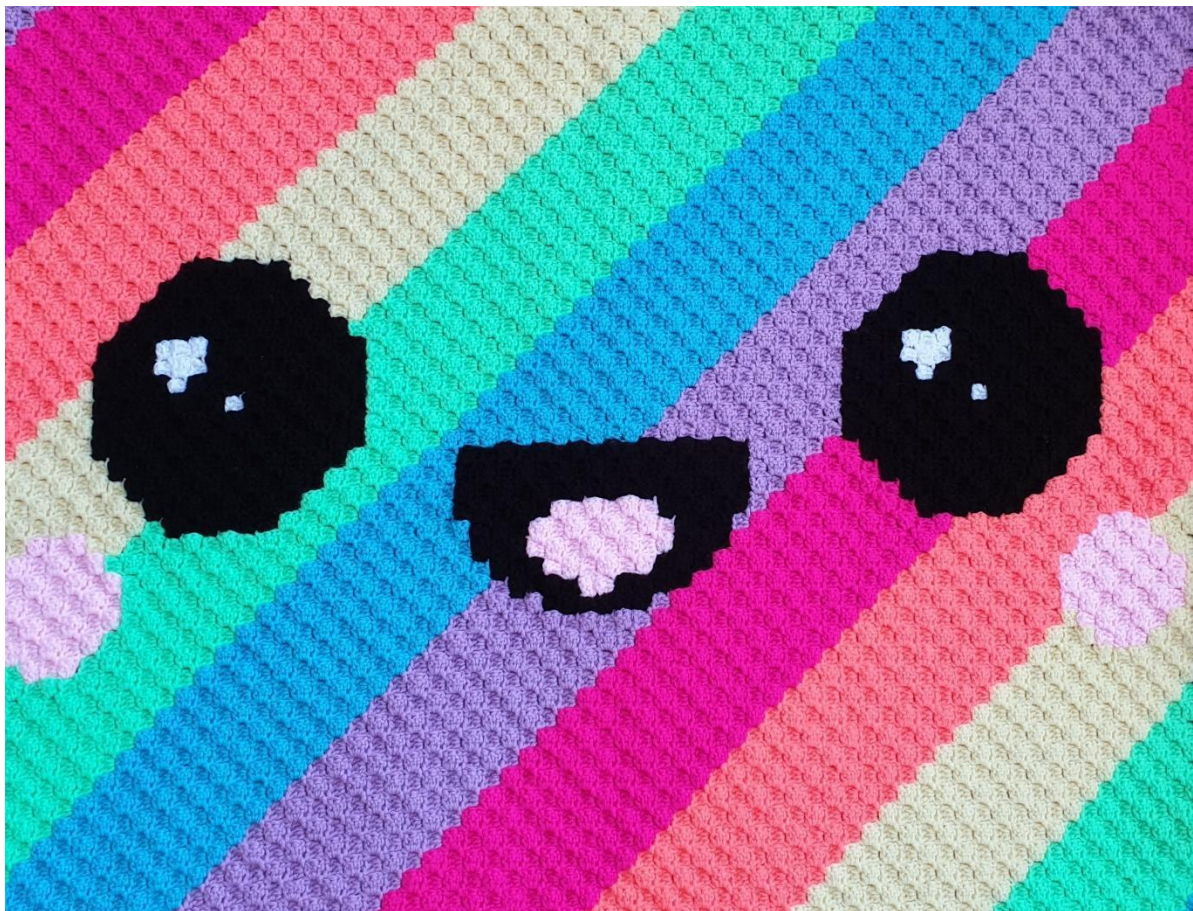
**dc** = double crochet

**st** = stitch

The blanket is crocheted with the "corner to corner" method "C2C". The pattern is made up of a diagram and written instructions for each row so you can keep track of how many blocks (pixels) you should have of each color. The arrows in the pattern show which direction the row should be worked. Begin in the lower right corner.

A good tip is to weave in the ends as you crochet so you don't have a million ends to weave in at the end.

If you think it is difficult to keep track of so many skeins, you can try wrapping some of the yarn onto a clothespin, so you can easily attach the colors you are not currently using and have them held by the clothespin so they don't get tangled up in the other colors.



## Written instructions for each row

- ← **Row 1 [RS]:** Lavender
- **Row 2 [WS]:** (Lavender) x 2
- ← **Row 3 [RS]:** (Lavender) x 3
- **Row 4 [WS]:** (Lavender) x 4
- ← **Row 5 [RS]:** (Lavender) x 5
- **Row 6 [WS]:** (Lavender) x 6
- ← **Row 7 [RS]:** (Lavender) x 7
- **Row 8 [WS]:** (Lavender) x 8
- ← **Row 9 [RS]:** (Lavender) x 9
- **Row 10 [WS]:** (Lavender) x 10
- ← **Row 11 [RS]:** (Lavender) x 11
- **Row 12 [WS]:** (Light Turquoise) x 12
- ← **Row 13 [RS]:** (Light Turquoise) x 13
- **Row 14 [WS]:** (Light Turquoise) x 14
- ← **Row 15 [RS]:** (Light Turquoise) x 15
- **Row 16 [WS]:** (Light Turquoise) x 16
- ← **Row 17 [RS]:** (Light Turquoise) x 17
- **Row 18 [WS]:** (Light Turquoise) x 18
- ← **Row 19 [RS]:** (Light Turquoise) x 19
- **Row 20 [WS]:** (Light Turquoise) x 20
- ← **Row 21 [RS]:** (Light Turquoise) x 21
- **Row 22 [WS]:** (Light Turquoise) x 22
- ← **Row 23 [RS]:** (Neon Green) x 23
- **Row 24 [WS]:** (Neon Green) x 24
- ← **Row 25 [RS]:** (Neon Green) x 25
- **Row 26 [WS]:** (Neon Green) x 26
- ← **Row 27 [RS]:** (Neon Green) x 27
- **Row 28 [WS]:** (Neon Green) x 28
- ← **Row 29 [RS]:** (Neon Green) x 29
- **Row 30 [WS]:** (Neon Green) x 30
- ← **Row 31 [RS]:** (Neon Green) x 31
- **Row 32 [WS]:** (Neon Green) x 32
- ← **Row 33 [RS]:** (Neon Green) x 33
- **Row 34 [WS]:** (Primrose Yellow) x 34
- ← **Row 35 [RS]:** (Primrose Yellow) x 35
- **Row 36 [WS]:** (Primrose Yellow) x 36
- ← **Row 37 [RS]:** (Primrose Yellow) x 37
- **Row 38 [WS]:** (Primrose Yellow) x 38
- ← **Row 39 [RS]:** Primrose Yellow, (Pink) x 3, (Primrose Yellow) x 35
- **Row 40 [WS]:** (Primrose Yellow) x 35, (Pink) x 4, Primrose Yellow
- ← **Row 41 [RS]:** Primrose Yellow, (Pink) x 5, (Primrose Yellow) x 35
- **Row 42 [WS]:** (Primrose Yellow) x 36, (Pink) x 4, (Primrose Yellow) x 2
- ← **Row 43 [RS]:** (Primrose Yellow) x 2, (Pink) x 5, (Primrose Yellow) x 36
- **Row 44 [WS]:** (Primrose Yellow) x 37, (Pink) x 4, (Primrose Yellow) x 3
- ← **Row 45 [RS]:** (Coral) x 3, (Pink) x 5, (Coral) x 37

- **Row 46 [WS]:** (Coral) x 38, (Pink) x 4, (Coral) x 4
- ← **Row 47 [RS]:** (Coral) x 5, (Pink) x 3, (Coral) x 39
- **Row 48 [WS]:** (Coral) x 48
- ← **Row 49 [RS]:** (Coral) x 49
- **Row 50 [WS]:** (Coral) x 50
- ← **Row 51 [RS]:** (Coral) x 51
- **Row 52 [WS]:** (Coral) x 52
- ← **Row 53 [RS]:** (Coral) x 6, (Black) x 5, (Coral) x 42
- **Row 54 [WS]:** (Coral) x 42, (Black) x 6, (Coral) x 6
- ← **Row 55 [RS]:** (Coral) x 6, (Black) x 7, (Coral) x 42
- **Row 56 [WS]:** (Neon pink) x 42, (Black) x 8, (Neon pink) x 6
- ← **Row 57 [RS]:** (Neon pink) x 6, (Black) x 9, (Neon pink) x 42
- **Row 58 [WS]:** (Neon pink) x 42, (Black) x 10, (Neon pink) x 6
- ← **Row 59 [RS]:** (Neon pink) x 7, (Black) x 9, (Neon pink) x 43
- **Row 60 [WS]:** (Neon pink) x 43, (Black) x 10, (Neon pink) x 7
- ← **Row 61 [RS]:** (Neon pink) x 8, (Black) x 4, White, (Black) x 4, (Neon pink) x 44
- **Row 62 [WS]:** (Neon pink) x 44, (Black) x 10, (Neon pink) x 8
- ← **Row 63 [RS]:** (Neon pink) x 9, (Black) x 9, (Neon pink) x 45
- **Row 64 [WS]:** (Neon pink) x 45, (Black) x 10, (Neon pink) x 9
- ← **Row 65 [RS]:** (Neon pink) x 10, (Black) x 4, (White) x 2, (Black) x 3, (Neon pink) x 46

CORNER, begin with a decrease to create the corner

- **Row 66 [WS]:** (Neon pink) x 46, (Black) x 4, (White) x 2, (Black) x 4, (Neon pink) x 10
- ← **Row 67 [RS]:** (Lavender) x 11, (Black) x 4, (White) x 2, (Black) x 3, (Lavender) x 6, (Black) x 3, (Lavender) x 37
- **Row 68 [WS]:** (Lavender) x 35, (Black) x 6, (Lavender) x 5, (Black) x 3, White, (Black) x 4, (Lavender) x 12
- ← **Row 69 [RS]:** (Lavender) x 13, (Black) x 7, (Lavender) x 5, (Black) x 7, (Lavender) x 34
- **Row 70 [WS]:** (Lavender) x 33, (Black) x 2, (Pink) x 2, (Black) x 4, (Lavender) x 5, (Black) x 6, (Lavender) x 14
- ← **Row 71 [RS]:** (Lavender) x 15, (Black) x 5, (Lavender) x 5, (Black) x 4, (Pink) x 4, Black, (Lavender) x 32
- **Row 72 [WS]:** (Lavender) x 31, Black, (Pink) x 4, (Black) x 4, (Lavender) x 26
- ← **Row 73 [RS]:** (Lavender) x 27, (Black) x 3, (Pink) x 4, (Black) x 2, (Lavender) x 30
- **Row 74 [WS]:** (Lavender) x 30, Black, (Pink) x 4, (Black) x 3, (Lavender) x 28
- ← **Row 75 [RS]:** (Lavender) x 29, (Black) x 3, (Pink) x 4, Black, (Lavender) x 29
- **Row 76 [WS]:** (Lavender) x 28, (Black) x 2, (Pink) x 3, (Black) x 3, (Lavender) x 30
- ← **Row 77 [RS]:** (Lavender) x 31, (Black) x 3, (Pink) x 3, Black, (Lavender) x 28
- **Row 78 [WS]:** (Light Turquoise) x 27, (Black) x 2, (Pink) x 2, (Black) x 3, (Light Turquoise) x 32
- ← **Row 79 [RS]:** (Light Turquoise) x 33, (Black) x 6, (Light Turquoise) x 27
- **Row 80 [WS]:** (Light Turquoise) x 26, (Black) x 6, (Light Turquoise) x 34
- ← **Row 81 [RS]:** (Light Turquoise) x 35, (Black) x 5, (Light Turquoise) x 26
- **Row 82 [WS]:** (Light Turquoise) x 26, (Black) x 4, (Light Turquoise) x 36
- ← **Row 83 [RS]:** (Light Turquoise) x 37, (Black) x 4, (Light Turquoise) x 25
- **Row 84 [WS]:** (Light Turquoise) x 25, (Black) x 3, (Light Turquoise) x 38

- ← **Row 85 [RS]:** (Light Turquoise) x 39, (Black) x 2, (Light Turquoise) x 25  
→ **Row 86 [WS]:** (Light Turquoise) x 25, Black, (Light Turquoise) x 40  
← **Row 87 [RS]:** (Light Turquoise) x 66  
→ **Row 88 [WS]:** (Light Turquoise) x 66  
CORNER, begin with a decrease to create the corner.  
← **Row 89 [RS]:** (Neon Green) x 65  
→ **Row 90 [WS]:** (Neon Green) x 64  
← **Row 91 [RS]:** (Neon Green) x 63  
→ **Row 92 [WS]:** (Neon Green) x 62  
← **Row 93 [RS]:** (Neon Green) x 41, (Black) x 5, (Neon Green) x 15  
→ **Row 94 [WS]:** (Neon Green) x 14, (Black) x 6, (Neon Green) x 40  
← **Row 95 [RS]:** (Neon Green) x 39, (Black) x 7, (Neon Green) x 13  
→ **Row 96 [WS]:** (Neon Green) x 5, (Pink) x 3, (Neon Green) x 4, (Black) x 8, (Neon Green) x 38  
← **Row 97 [RS]:** (Neon Green) x 37, (Black) x 9, (Neon Green) x 3, (Pink) x 4, (Neon Green) x 4  
→ **Row 98 [WS]:** (Neon Green) x 3, (Pink) x 5, (Neon Green) x 2, (Black) x 10, (Neon Green) x 36  
← **Row 99 [RS]:** (Neon Green) x 36, (Black) x 9, (Neon Green) x 3, (Pink) x 4, (Neon Green) x 3  
→ **Row 100 [WS]:** (Primrose Yellow) x 2, (Pink) x 5, (Primrose Yellow) x 2, (Black) x 10, (Primrose Yellow) x 35  
← **Row 101 [RS]:** (Primrose Yellow) x 35, (Black) x 4, White, (Black) x 4, (Primrose Yellow) x 3, (Pink) x 4, (Primrose Yellow) x 2  
→ **Row 102 [WS]:** Primrose Yellow, (Pink) x 5, (Primrose Yellow) x 2, (Black) x 10, (Primrose Yellow) x 34  
← **Row 103 [RS]:** (Primrose Yellow) x 34, (Black) x 9, (Primrose Yellow) x 3, (Pink) x 4, Primrose Yellow  
→ **Row 104 [WS]:** Primrose Yellow, (Pink) x 3, (Primrose Yellow) x 3, (Black) x 10, (Primrose Yellow) x 33  
← **Row 105 [RS]:** (Primrose Yellow) x 33, (Black) x 4, (White) x 2, (Black) x 3, (Primrose Yellow) x 7  
→ **Row 106 [WS]:** (Primrose Yellow) x 6, (Black) x 4, (White) x 2, (Black) x 4, (Primrose Yellow) x 32  
← **Row 107 [RS]:** (Primrose Yellow) x 32, (Black) x 4, (White) x 2, (Black) x 3, (Primrose Yellow) x 6  
→ **Row 108 [WS]:** (Primrose Yellow) x 6, (Black) x 3, White, (Black) x 4, (Primrose Yellow) x 32  
← **Row 109 [RS]:** (Primrose Yellow) x 32, (Black) x 7, (Primrose Yellow) x 6  
→ **Row 110 [WS]:** (Primrose Yellow) x 6, (Black) x 6, (Primrose Yellow) x 32  
← **Row 111 [RS]:** (Coral) x 32, (Black) x 5, (Coral) x 6  
→ **Row 112 [WS]:** (Coral) x 42  
← **Row 113 [RS]:** (Coral) x 41  
→ **Row 114 [WS]:** (Coral) x 40  
← **Row 115 [RS]:** (Coral) x 39  
→ **Row 116 [WS]:** (Coral) x 38

- ← **Row 117 [RS]:** (Coral) x 37
- **Row 118 [WS]:** (Coral) x 36
- ← **Row 119 [RS]:** (Coral) x 35
- **Row 120 [WS]:** (Coral) x 34
- ← **Row 121 [RS]:** (Coral) x 33
- **Row 122 [WS]:** (Neon pink) x 32
- ← **Row 123 [RS]:** (Neon pink) x 31
- **Row 124 [WS]:** (Neon pink) x 30
- ← **Row 125 [RS]:** (Neon pink) x 29
- **Row 126 [WS]:** (Neon pink) x 28
- ← **Row 127 [RS]:** (Neon pink) x 27
- **Row 128 [WS]:** (Neon pink) x 26
- ← **Row 129 [RS]:** (Neon pink) x 25
- **Row 130 [WS]:** (Neon pink) x 24
- ← **Row 131 [RS]:** (Neon pink) x 23
- **Row 132 [WS]:** (Neon pink) x 22
- ← **Row 133 [RS]:** (Lavender) x 21
- **Row 134 [WS]:** (Lavender) x 20
- ← **Row 135 [RS]:** (Lavender) x 19
- **Row 136 [WS]:** (Lavender) x 18
- ← **Row 137 [RS]:** (Lavender) x 17
- **Row 138 [WS]:** (Lavender) x 16
- ← **Row 139 [RS]:** (Lavender) x 15
- **Row 140 [WS]:** (Lavender) x 14
- ← **Row 141 [RS]:** (Lavender) x 13
- **Row 142 [WS]:** (Lavender) x 12
- ← **Row 143 [RS]:** (Lavender) x 11
- **Row 144 [WS]:** (Light Turquoise) x 10
- ← **Row 145 [RS]:** (Light Turquoise) x 9
- **Row 146 [WS]:** (Light Turquoise) x 8
- ← **Row 147 [RS]:** (Light Turquoise) x 7
- **Row 148 [WS]:** (Light Turquoise) x 6
- ← **Row 149 [RS]:** (Light Turquoise) x 5
- **Row 150 [WS]:** (Light Turquoise) x 4
- ← **Row 151 [RS]:** (Light Turquoise) x 3
- **Row 152 [WS]:** (Light Turquoise) x 2
- ← **Row 153 [RS]:** Light Turquoise

# Diagram



## Corner to corner

### Row 1



1. Start with a Ch 5



2. In the 3rd ch from the hook, work 1 dc.



3. Work dc in the next 2 ch sts.  
You have now made 1 pixel.



## Row 2



1. Ch 5



2. Work 1 dc in the 3rd ch from the hook



3. Work dc in the next 2 ch sts.  
You have now made 1 pixel.



4. Now this pixel needs to be joined to the first pixel. You do this by turning the pixel and working a sl st in the left side of the first pixel. The picture shows the 2 joined pixels.



5. Ch 2 (counts as the first dc)



6. Work 3 dc in the ch gap that you have just worked a sl st into. You now have 2 pixels on Row 2.

### Row 3



1. Ch 5



2. Work dc in the 3rd ch from the hook and dc in the next 2 ch sts



3. Sl in the pixel below.



4. Ch 2 and work 3 dc in the ch gap that you have just worked the sl st into.



5. Work 1 st in the neighboring pixel. Ch 2. Work 3 dc in the ch gap that you just worked a sl st into. You now have 3 pixels and row 3 is done.

## Decreasing for the corner



1. Instead of working ch 5 at the end of the row, work 3 sl sts along the side of the last pixel.



2. Continue working the pixels as before to the end of the row.



3. Here you can see how to make the decreases when you need to do so at the end of a row. Join 2 pixels together with a sl st.

## Edge

### Rnd 1



1. You can start anywhere on the blanket.



2. Ch 3.



3. Work 1 sl st between the next 2 pixels.



4. Ch 3.



5. Work 1 sl st between the next 2 pixels.



6. When you come to the corner, work 1 sl st in the corner



7. Ch 2.



8. Work 1 more sl st in the corner.



9. Ch 3.



10. Continue working around the blanket in this manner



11. End with a sl st at the beginning of the rnd.

## Rnd 2



1. Ch 1. All sts in this rnd are worked in the ch space from the previous rnd.



2. Work 3 sc in each ch-space.



3. Repeat 3 sc in each ch-space to the corner.



4. In the ch-space with 2 ch sts, work 3 sc





5. Continue with 3 sc in each ch-space to the end of the rnd.



6. End with a sl st.

### Rnd 3



1. Now you will work 3 hdc in the next sc. All 3 hdc in the same st.



2. Skip 1 st and work 1 sl st in the space from the previous rnd.



3. Work 3 hdc in the next st.



4. Skip 1 st and work 1 sl st in the space from the previous rnd.



5. Continue in this manner:  
\*3hdc in the same st, skip 1 st, sl st\*



6. When you get to the corner, work  
\*3hdc in the same st, skip 1 st, sl st\*



7. Continue working around the corner with  
\*3 hdc in the same st, skip 1 st, sl st \*



8. Continue to the end of the rnd.



9. End with a sl st.