



KNITTING PATTERN

Manuela

Dishcloth

Design: Stine Radicke | Hobbii Design



MATERIALS

1 skein of Friends Cotton 8/4 col 66

Knitting needle size 2.5 (3 mm)

Crochet hook size B/1-C/2 (2,5 mm)

YARN QUALITY

 **Friends Cotton 8/4**, Hobbii

100% Cotton/ 50 g (1.75 oz) = 160 meter (175 yds)

GAUGE

26 sts and 38 rows = 4" (10 cm) in stockinette stitch

PICOT EDGE

Chain 3, work 1 slip stitch in the first chain stitch, skip 1 stitch and work 1 sc. Repeat from *to*.

SIZES

Onesize

MEASUREMENTS

Approx. 10.2 x 10.2 inches (26x26 cm)

ABOUT THE PATTERN

The dishcloth is knitted first. Then you crochet the picot edge all the way around your work.

HASHTAGS ON SOCIAL MEDIA

#hobbiidesign #hobbiimanuela

BUY THE YARN HERE

<http://shop.hobbii.com/manuela-dishcloth>

QUESTIONS

If you have any questions regarding this pattern, please feel free to email us at support@hobbii.com

Please make sure to include the pattern's name and number.

Happy Crafting!

Pattern



Dishcloth

Knit ridge edges all the way around the dishcloth. The pattern is worked after the chart below in which there is only whole “diamonds”.

Ridge edge

Cast on 65 stitches.

1. row: move 1 stitch loosely off purlwise, work the rest of the knit stitch row.

Repeat this row 4 more times.

Continue the pattern as shown in the chart and with the ridge edge around the sides.

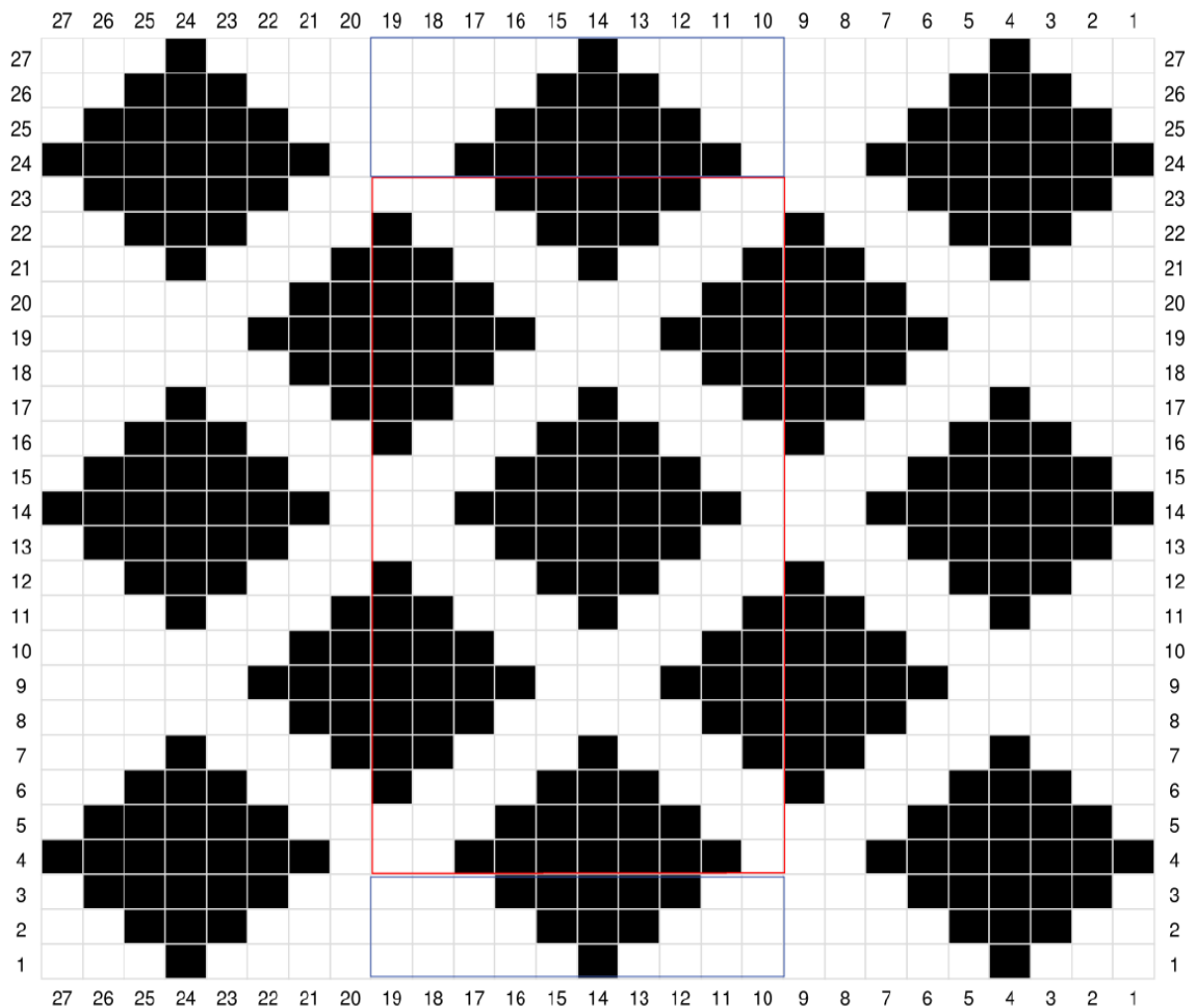
1. pattern row: move 1 stitch loosely off purlwise, work 3 knit stitches, work as shown in the chart by repeating the blue frame until you have 12 stitches left, work the last 8 stitches of the chart, work 4 knit stitches.

Note: Knit garter stitches on each side where the first stitch on the row is loosely taken off purlwise.

Work the 2nd and the 3rd pattern row.

Continue like this, but now repeat the red frame until your work measures approx. 8.7 inches (22 cm). Finish as the red frame shows.

Knit the last 4 rows of the chart as described in the beginning of the pattern except for the blue frame.



Knit stitch from the right side, purl stitch from the wrong side
 Purl stitch from the right side, knit stitch from the wrong side

Ridge edge

Knit the ridge edge as you did in the beginning of the pattern.
Cast off, but do not fasten off. Use the last loop as a starting point for the picot edge.

Picot edge

Crochet the picot edge all the way around your work (the knitted dishcloth). Weave in the ends.

Happy knitting!

Stine