



Dolce Harlequin Scarf

No. 1001-184-8583

Materials:

- Dolce Cashmere
- Crochet hook size 4 mm / US G/6

Buy your yarn and accessories here:

<http://shop.hobbii.com/dolce-harlequin-scarf>

Measurements:

- Length approx. 192 cm.
- Width in middle approx. 48 cm.

Crochet gauge:

10 rows x 20 st = 10 x 10 cm.

Usage approx.: 1 ball of Dolce Cashmere

Abbreviations:

St: stitch(es)

Ch: chain stitch

Dc: double crochet

Dc2tog: double crochet decrease
(1 dc over 2 dc)

Inc: increase

Dec: decrease

Information:

Replace the first dc on every row by ch 3.

Please note that the last dc on every row must be worked in the third ch from previous row. It does tend to hide a bit 😊



It's important to maintain the correct gauge to ensure you have enough yarn. If you are in doubt, then you can weigh the yarn ball halfway to ensure you have half a ball over for the rest of the shawl.

Pattern

1. Ch 3 and work 1 dc in 3rd ch from hook. (2)



2. Ch 3 to turn. Work 1 dc in first st and 1 dc in last st. (3)



1. Ch 3 to turn. (= 1 dc)



2. You inc by working 1 dc in first st. The stitch is here marked with the needle.



3. Like this. You now have 2 dc in first st, ch 3 = 1st dc.



4. Work 1 dc in last st. You have now inc 1 st on your row.

3. Ch 3 to turn. Work 1 dc in first st and 1 dc each of the last 2 st. (4)



1. Ch 3 to turn.



2. Work 1 dc in first st. (The needle marks the first st.)



3. Like this. You have now inc 1 st.



4. Work 1 dc in each of the last 2 st.

4.-20. Repeat working the rows as follows: "Ch 3 to turn. Work 1 dc in first st and 1 dc in each st on entire row", until you have worked 20 rows. (21)



21. You now work a pattern row with inc. The pattern rows are worked as follows:
Ch 3 to turn. "Skip 1 st and work 1 dc in next st. Now work 1 dc in skipped st". Repeat from "to" on entire row until you have 1 st left. Work 1 dc in last st. (22)



1. Ch 3 to turn.



2. Skip 1 st,



3. Work 1 dc.



4. Now work 1 dc in skipped st.



5. Like this.



6. Skip 1 st,



7. Work 1 dc.



8. Now work 1 dc in skipped st.



9. Like this.



10. Repeat making the crossed dc's until you have 1 st left.



11. Work 1 dc in the last st.



12. Like this.

22. Now work 1 row with dc and inc as before. Ch 3 to turn and work 1 dc in first st. Work 1 dc in every st on entire row." (23)



23. Now work one more pattern row: Ch 3 to turn. "Skip 1 st and 1 dc in next st. Work 1 dc in skipped st". Repeat from " to " on entire row until you have 1 st left. Work 1 dc in last st. (24)



1. Ch 3 to turn.



2. Skip 1 st,



3. Work 1 dc.



4. Now work 1 dc in skipped st.



5. Like this.



6. Skip 1 st,



7. Work 1 dc.



8. Now work 1 dc in skipped st.



9. Like this.



10. Repeat working the crossed dc's until you have 1 st left.



11. Work 1 dc in last st.



12. Now work 1 pattern row.

24. Ch 3 to turn. Work 1 dc in first st and work 1 dc in every st on entire row." (25)

25. Ch 3 to turn. Work 1 dc in first st and work 1 dc in every st on entire row." (26)

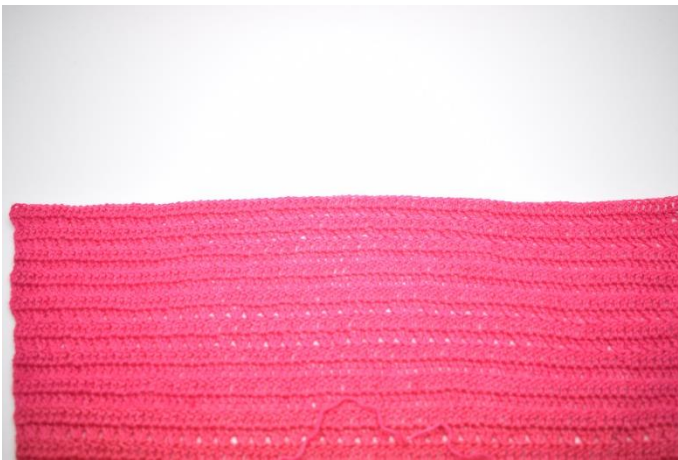
26. Ch 3 to turn. Work 1 dc in first st and work 1 dc in every st on entire row." (27)

27. Ch 3 to turn. Work 1 dc in first st and work 1 dc in every st on entire row." (28)

28. Ch 3 to turn. Work 1 dc in first st and work 1 dc in every st on entire row." (29)



29.- 96. Repeat working the rows as follows: 1 row pattern, 1 row dc, 1 row pattern, 5 rows dc. Repeat this until you have worked a total of 96 rows. (97)



The shawl is now at its widest. You now proceed by making 1 dec on every row. You work the dec in rows with dc as follows:

97. Ch 3 to turn and work the next 2 dc together (= dc2tog). Work 1 dc in each st on entire row. (96)



1. Ch 3 to turn.



2. Now dec 1 st. You do this by working the 2nd and 3rd st together.



3. Like this.



4. Work 1 dc in each st on entire row.

98. Ch 3 to turn. Dc2tog and work 1 dc in every st on entire row. (95)



Now work 1 pattern row with dec. You work this row as follows:

99. Ch 3 to turn. Skip 2 st and work 1 dc in next st. Work 1 dc in the second st you skipped. "Skip 1 st and work 1 dc in next st. Work 1 dc in skipped st". Repeat from "to" on entire row until you have 2 st left. Skip 1 st and work 1 dc in last st. (94)



1. Ch 3 to turn.



2. Skip 2 st.



3. Work 1 dc.



4. Work 1 dc in 2nd st you skipped.



5. Like this.



6. Now work the pattern as before. "Skip 1 st and 1 dc in next st. Work 1 dc in skipped st". Repeat from "to" on entire row until you have 2 st left.



7. Skip 1 st,



8. Work 1 dc in last st.

100. Ch 3 to turn. Dc2tog and work 1 dc in each st on entire row. (93)

101. Ch 3 to turn. Skip 2 st and work 1 dc in next st. Work 1 dc in the second st you skipped. "Skip 1 st and work 1 dc in next st. Work 1 dc in skipped st". Repeat from "to" on entire row until you have 2 st left. Skip 1 st and work 1 dc in last st. (92)

102. Ch 3 to turn. Dc2tog and work 1 dc in each st on entire row. (91)

103. Ch 3 to turn. Dc2tog and work 1 dc in each st on entire row. (90)

104. Ch 3 to turn. Dc2tog and work 1 dc in each st on entire row. (89)

105. Ch 3 to turn. Dc2tog and work 1 dc in each st on entire row. (88)

106. Ch 3 to turn. Dc2tog and work 1 dc in each st on entire row. (87)

107. - 173. Repeat the procedure working 1 pattern row, 1 row dc, 1 row pattern, 5 rows dc. Repeat this until you have worked a total of 173 rows (20 st left).

174. Ch 3 to turn. Dc2tog and work 1 dc in each st on entire row. (19)

175. Ch 3 to turn. Dc2tog and work 1 dc in each st on entire row. (18)

176. Ch 3 to turn. Dc2tog and work 1 dc in each st on entire row. (17)

177. Ch 3 to turn. Dc2tog and work 1 dc in each st on entire row. (16)

178. Ch 3 to turn. Dc2tog and work 1 dc in each st on entire row. (15)

179. Ch 3 to turn. Dc2tog and work 1 dc in each st on entire row. (14)

180. Ch 3 to turn. Dc2tog and work 1 dc in each st on entire row. (13)

181. Ch 3 to turn. Dc2tog and work 1 dc in each st on entire row. (12)

182. Ch 3 to turn. Dc2tog and work 1 dc in each st on entire row. (11)

183. Ch 3 to turn. Dc2tog and work 1 dc in each st on entire row. (10)

184. Ch 3 to turn. Dc2tog and work 1 dc in each st on entire row. (9)

185. Ch 3 to turn. Dc2tog and work 1 dc in each st on entire row. (8)

186. Ch 3 to turn. Dc2tog and work 1 dc in each st on entire row. (7)

187. Ch 3 to turn. Dc2tog and work 1 dc in each st on entire row. (6)

188. Ch 3 to turn. Dc2tog and work 1 dc in each st on entire row. (5)

189. Ch 3 to turn. Dc2tog and work 1 dc in each st on entire row. (4)

190. Ch 3 to turn. Dc2tog and work 1 dc in each st on entire row. (3)

191. Ch 3 to turn. Dc2tog. (2) Cut the yarn and weave in ends.



Enjoy ☺

Love from Hobbii